



# FEATURES

- Clear & informative graphic display
- Highest grade HEPA and carbon technology
- Automatic electronic flow control - maintains a constant extraction rate even as the filter blocks
- Gas and particle sensors to warn the operator
- Adjustable airflow

## SPECIFICATIONS

<b>Voltage</b>	<b>120v</b>	<b>230v</b>
<b>Part Number</b>	<b>0LX3001</b>	<b>0LX3000</b>
Wattage	1.2kW	1.2kW
Frequency	50Hz / 60Hz	50Hz / 60Hz
Cabinet Height	885mm	885mm
Cabinet Width	455mm	455mm
Cabinet Depth	517mm	517mm
Cabinet Weight	50kg	50kg
Sound Level	<60dBa	<60dBa
Airflow	330m3/h	360m3/h

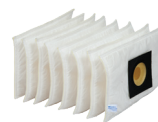
## INCLUDED AS STANDARD...

### FILTERS



**Main Filter**  
**Code**  
 MPEF-113505

**Description**  
 HEPA/Chemical



**Pre-filter**  
**Code**  
 MPEF-111085

**Description**  
 F6 Labyrinth

Find out more:



[www.FumeFiltration.com](http://www.FumeFiltration.com)



[sales@fumefiltration.com](mailto:sales@fumefiltration.com)



[sales@jorlink.com](mailto:sales@jorlink.com)

**+1 (336) 288-1613**

## CONNECTION KIT

**Connection kit is included  
 see overleaf for options**

# OPTIONS

## Main Filter

<b>Code:</b>	<b>Description:</b>
MPEF-113505H	HEPA/Chemical (Hydrophobic)
MPEF-113579	HEPA/Twin Chemical
MPEF-113668	HEPA/Twin Chemical
MPEF-113512	HEPA/Chemical (Cleanroom)
MPEF-113669	HEPA/Chemical (Cleanroom)
MPEF-113508	Chemical
MPEF-113809	HEPA

## Main Filter

<b>Code:</b>	<b>Description:</b>
MPEF-113662	Chemical Special
MPEF-113505P	Chemical Special

## Pre-filter

<b>Code:</b>	<b>Description:</b>
MPEF-111095	F8/F9 Labyrinth

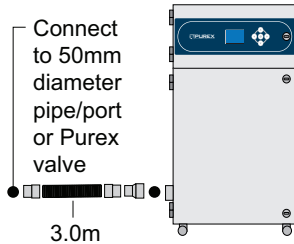
## Connection Kits

Hose End Diameter

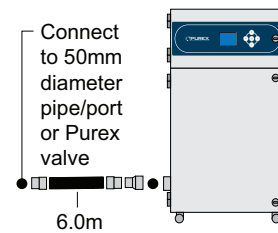
Hose Length

Purex Inlet Diameter

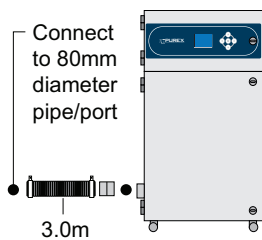
**Code:** 100032    **50mm**    **3m**    **80mm**



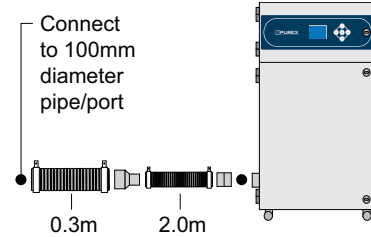
**Code:** 100043    **50mm**    **6m**    **80mm**



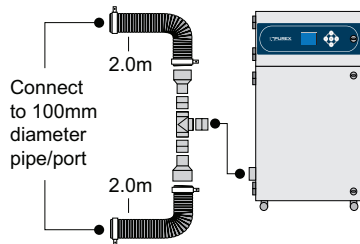
**Code:** 120299    **80mm**    **3m**    **80mm**



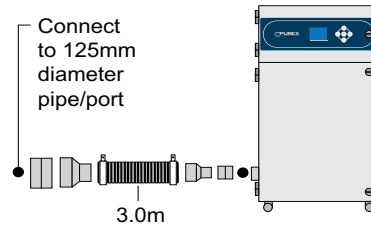
**Code:** 120288    **100mm**    **2.3m**    **80mm**



**Code:** 120297    **100mm**    **2m**    **80mm**

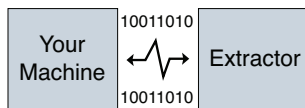


**Code:** 100171    **125mm**    **3m**    **80mm**



*If you do not see a connection kit that fits your machine or pipework, please contact Purex or your representative*

## Interfacing



Interfacing can remotely start the Purex machine when the connected machine starts.

Interfacing can also warn the connected machine when the Purex machine is in alarm.

*Take a look through our Interfacing Guide to see our extensive range of options*



Jorlink USA, Inc, 3714 Alliance Dr., Suite 100  
 Greensboro, NC 27407  
 sales@jorlink.com  
 sales@fumefiltration.com  
 Tel (336) 288-1613