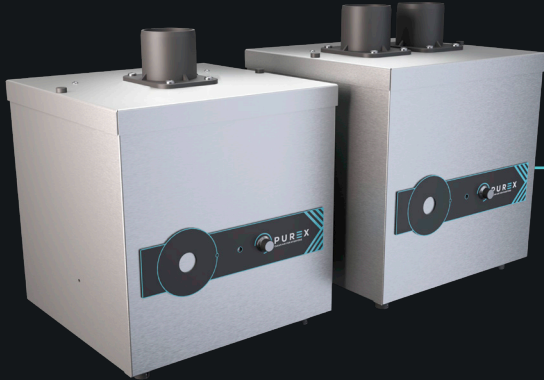




FUMECUBE LITE

Compact, soldering fume extraction unit



Description & features

- Run LED & speed control
- Highest grade HEPA and carbon technology
- Adjustable airflow
- Quiet in operation
- Simple to install and easy to relocate

Filters



Main Filter Code

110507

Description

HEPA/Chemical



Pre-Filter Code

200036

Description

F5 Pad

Specification

Voltage	230v
Single Arm Part Number	072082
Dual Arm Part Number	072083
Wattage	0.32kW
Frequency	50Hz / 60Hz
Cabinet Height	346mm
Cabinet Width	286mm
Cabinet Depth	291mm
Cabinet Weight	12kg
Airflow	170m3/h
Sound Level	<60dBa

Machine supplied with

• 1 x Main Filter • 1 x Pre-filter • 1 or 2 x Connection Kit • 1 x Power Cable • 1 x Manual



FUMECUBE LITE

Options

Compact, soldering fume extraction unit

Main filter

Code	Description
110504	Chemical

Pre-filter


200095	F6 Pad	200045	F8 / F9 Pad
--------	--------	--------	-------------

Connection kits

100294

Includes

- 1 x 2m x 50mm flexible hose
- 2 x connecting cuffs
- 1 x 95mm conical cowl
- 1 x 38mm pen nib
- 1 x clamped bench bracket



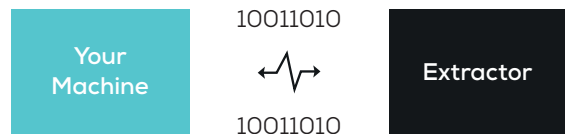
Replacement Arms

Code	Description
120128	38mm x 1.5m flexible stainless steel arm
120129	38mm x 0.75m flexible stainless steel arm
120199	38mm x 0.5m flexible stainless steel arm

Interfacing

Interfacing can remotely start the Purex machine when the connected machine starts.

Interfacing can also warn the connected machine when the Purex machine is in alarm.



Take a look through our [Interfacing Guide](#) to see our extensive range of options