

# FUMECUBE MAX

Compact, multi-use fume extraction unit

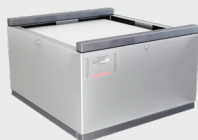
**PUREX**  
CLEAN AIR FOR EVERYONE



## Description & features

- VariColour filter blocked warning system
- Highest grade HEPA and carbon technology
- Automatic electronic flow control - maintains a constant extraction rate even as the filter blocks
- Quiet in operation
- Simple to install and easy to relocate

## Filters



Main Filter Code

110507

Description

HEPA/Chemical



Pre-Filter Code

111124

Description

F8/F9 Labyrinth

## Specification

Voltage	120v	230v
Part Number	See overleaf for more information	
Wattage	0.32kW	
Frequency	50Hz / 60Hz	
Cabinet Height	493mm	
Cabinet Width	308mm	
Cabinet Depth	330mm	
Cabinet Weight	14kg	
Airflow	170m <sup>3</sup> /h	
Sound Level	<60dBa	

## Machine supplied with

• 1 x Main Filter • 1 x Pre-filter • 1 x Connection Kit • 1 x Power Cable • 1 x Manual

# FUMECUBE MAX

Compact, multi-use fume extraction unit

## Options

### Main filter

Code

Description

110504

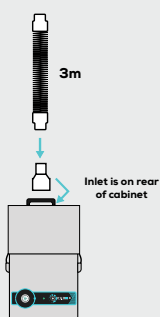
Chemical

### Connection kits

Part numbers below correlate to the connection kit you will receive when ordering a FumeCube Max

#### Machine + Hose Kit

Voltage	Part Number
120v	072141
230v	072140



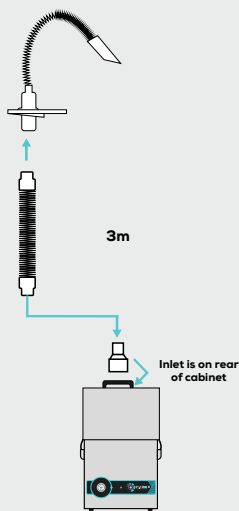
#### Includes:

3m x 50mm flexible hose  
2 x connecting cuffs



#### Machine + 38mm Single Arm Kit

Voltage	Part Number
120v	072143
230v	072142

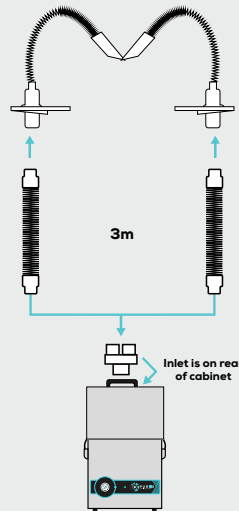


#### Includes:

1 x 80mm - 51mm reducer  
1 x Arm kit (100295) *see above*

#### Machine + 38mm Dual Arm Kit

Voltage	Part Number
120v	072145
230v	072144



#### Includes:

1 x 80mm - 51mm dual manifold  
2 x Arm kit (100295) *see above*

### Replacement Arms

Code

Description

120128

38mm x 1.5m flexible stainless steel arm

120129

38mm x 0.75m flexible stainless steel arm

120199

38mm x 0.5m flexible stainless steel arm

### Interfacing

Interfacing can remotely start the Purex machine when the connected machine starts.

Interfacing can also warn the connected machine when the Purex machine is in alarm.

Your Machine

10011010



10011010

Extractor

Take a look through our [Interfacing Guide](#) to see our extensive range of options

# PUREX

Find out more [W.purex.co.uk](http://W.purex.co.uk) | [T +44 \(0\)1405 746030](tel:+441405746030) | [E purex@purex.co.uk](mailto:purex@purex.co.uk)

Registered Office: Purex International Limited, QWP House, Island Drive, Capitol Park, Thorne, Doncaster DN8 5UE  
Registered No. 5136616 England | VAT No. GB842 5025 49 | WEEE Producer Registration Number: WEE/CE0067TX  
\*Goods are subject to change | \*Illustrations are 3D created visual representations