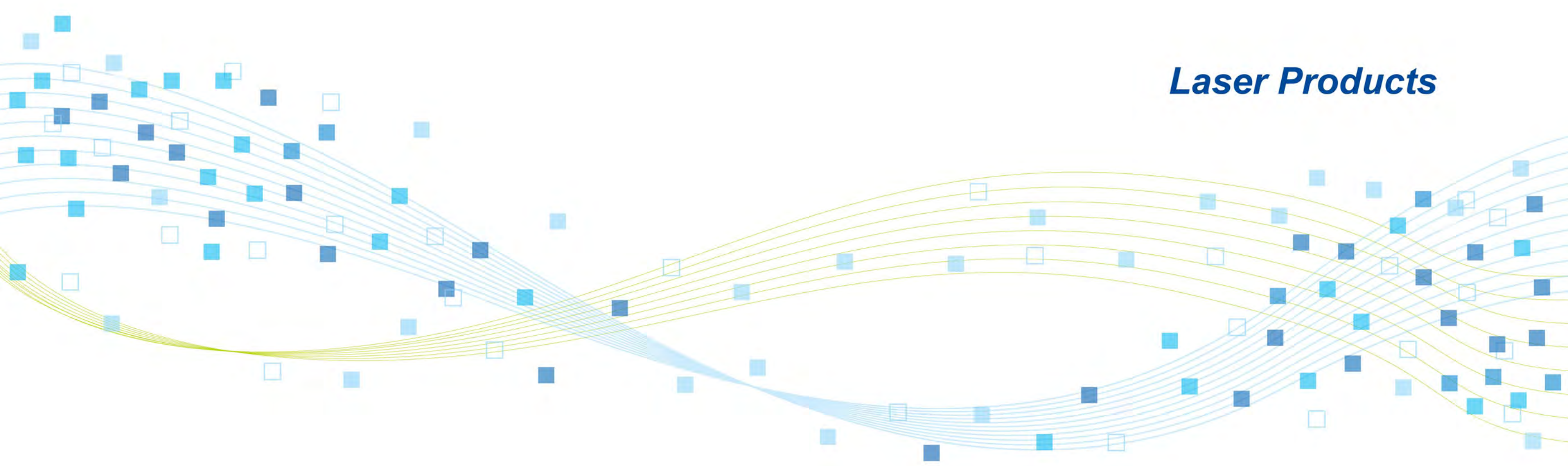


Laser Products



www.GCCworld.com



GCC Headquarters	4F-1., No.236, Fude 2nd Rd., Xizhi Dist., New Taipei City 22151, Taiwan	886-2-6616-6692	Fax : 886-2-2694-6875
GCC China	No.1, Chen Feng Road, Yushan, Kunshan, Jiangsu 215300, China	86-512-5726-1515	Fax : 86-512-5726-1518
GCC Europe B.V.	Eglantierbaan 43-45, 2908 LV, Capelle a/d IJssel, The Netherlands	31-10-458-9367	
GCC America, Inc	20453 E Valley Blvd.Walnut, CA 91789, USA	1-909-718-0248	Fax : 1-909-718-0251
		US & Canada Only	Toll Free: 1-888-284-5211



National Outstanding Award Outstanding Photonics products Award Industrial Technology Advancement Award

LASER SYSTEMS

Engraver \ Cutter \ Marker \ Digital Finishing Equipment

Founded in 1989, GCC is a global forefront equipment-manufacturing provider in the visual communication industries. Headquartered in Taiwan; GCC serves an international network of distributors worldwide and has branch offices throughout United States, Europe and China. GCC provides a broad range of hi-tech and quality products including cutting plotters, laser engraving / marking / cutting systems, UV-curable inkjet printers, printer/cutter and apparel plotters. With over 100 current and pending worldwide product patents and trademarks, GCC has earned a worldwide reputation for innovation, quality and reliability.

Table of Contents

1
Application Sample

P1 Application	
P1~3	Engraver/Cutter/Marker
P4	Digital Finishing Equipment

5
Laser Engraving Systems

P5~P6 Laser Engraving Systems	
P7~P8	E200
P9~P10	S400
P11~P12	Spirit Series
P13~P14	Spirit GLS Hybrid
P15~P16	Venus II & Mercury III
P17~P18	C180II
P19~P20	S290LS
P21~P22	MG380Hybrid

23
Laser Cutting Systems

P23 Laser Cutting Systems	
P24~P25	X Series
P26~P27	FMC280-Z1
P28~P29	T500

30
Laser Marking Systems

P30 Laser Marking Systems	
P31~P33	I & C Series
P34~P35	LFC D
P36~P37	LFC II Workstation

38
Digital Finishing Equipment

P38 Digital Finishing Equipment	
P39~P40	LabelExpress with Lamination System
P41~P42	DecalExpress / DecalExpress-ECO
P43~P44	DFS



GCC Laser Engraving Systems

GCC Laser Marking Systems

GCC Laser Cutting Systems

GCC Digital Finishing Equipment

Contact Info



GCC Headquarters
4F, No.236, Fu-Te 2nd Rd., Hsi Chih, Taipei Hsien, 221,Taiwan
Tel : +886-2-2694-6687 Fax :+886-2-2694-6875
sales@gccworld.com
www.GCCworld.com



GCC China
No.1,Chen Feng Road, Yushan, Kunshan, Jiangsu 215300, China
Tel : +86-512-5726-1515 Fax :+86-512-5726-1518
marketing@gcc-china.com
www.GCCworld.com



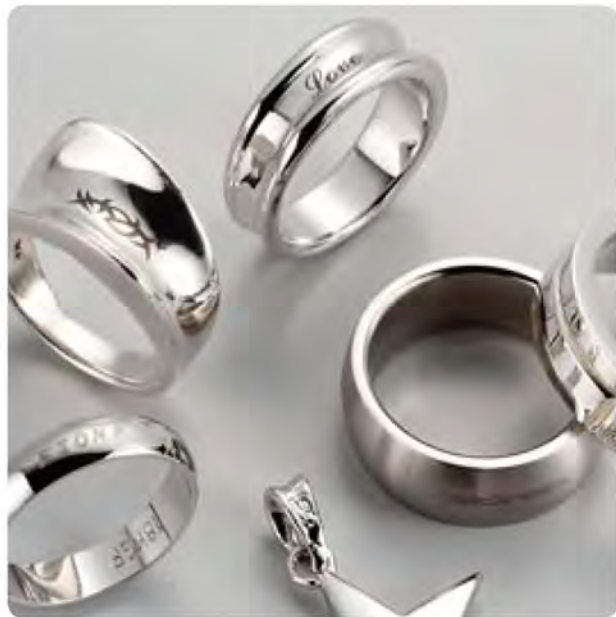
GCC America Inc.
20453 E Valley Blvd.Wainut, CA 91789, USA
Tel : +1-909-718-0248 Fax :+1-909-718-0251
sales@gccamerica.com
www.GCCworld.com



GCC Europe B.V.
Eglantierbaan 43-45 , 2908 LV, Capelle aan den IJssel, The Netherlands
Tel : +31-(0)10-458-9367
eusales@gccworld.com
www.GCCworld.com

Laser Marking Systems

GCC LaserPro laser markers are fast and dependable industrial systems that can be setup to fulfill mass production needs. Various different kinds of application or special effects such as permanent marking are achievable with different types of laser.



Ring



IC Chip



Key Pad



Stainless Steel



Image Marking



Motor Encoder



Recordable Media



2-ply Laminate



Golf Club



Pharmaceutical Packaging



2D Barcode on PCB



Carton Box



1D Barcode



Lighter

Digital Finishing Equipment

The LabelExpress & DFS die cutter are high speed label cutting systems that deliver high flexibility and great precision with an intuitive operation. It is the best tool for label cutting applications, as well as customized graphics-cutting.



Heat Transfer



Bottle Label



Label



3M Carbon-Black Reflective Film



Label



3D Puzzle



3M Carbon-Black Reflective Film



Siser Brick 1000 Material



3M Carbon-Black Reflective Film



PU Film



GCC LaserPro Laser Engraving / Marking / Cutting Systems

GCC LaserPro laser product line includes engravers, markers, and cutters, which carries exceptional laser output quality, and provides quality engraving, marking and cutting results. With our continuous R&D development, our laser products have been awarded with numerous patents and earned countless awards.

Laser Engraving Systems

GCC LaserPro laser engravers carry wide selection of wattages and various working table sizes. Users can easily choose the model that best fit their business needs. Years of R&D experience and quality-assured product has brought GCC global acclaims and popularity among users worldwide.



E200

E200 provides an easy operating workflow and is able to complete different processing procedures quickly. Most importantly, E200 contains various advanced functions with stable quality, and excellent safety features.



S400

Inherit all the advantages from Spirit Hybrid, a brand new machine – S400 features 140ips processing speed by DC servo motor, innovative touch panel, user friendly interface and a modern good looking design. Together with SmartLID easy access, dust protection, S400 presents you the highest throughput and precise laser quality.



Spirit GLS Hybrid

Spirit GLS Hybrid is an award-winning model of Spirit line for laser machines. In succession to GCC LaserPro's worldwide accolades features, Spirit GLS Hybrid further upscales its capability to CO₂ & Fiber Hybrid laser option in one system. Let this hybrid laser machine upgrade your business for more engraving, cutting, marking applications on organic and metal materials.

Spirit Series (Spirit, Spirit LS, Spirit GLS Hybrid)

The cream of the crop, the Spirit Series with Spirit, Spirit LS, and Spirit GLS models are the professional models from the ingenious GCC LaserPro laser machine line up. Equipped with the most versatile and up-to-date features available in the industry, the Spirit Series is the best choice for advanced use.



C180II

The desktop C180II is designed to provide an enjoyable engraving experience. Underneath the stylish exterior is a full 18" x 12" (458 x 305 mm) working area. Engraving depth can be easily extended from the normal 4 inches to 6 inches in less than a minute. The C180II is an all purpose laser engraving system that delivers spectacular engraving and cutting results and makes every job a pleasant working experience.

Venus II & Mercury III

The workhorse models from the GCC LaserPro laser machine line up answers the call for your everyday production needs. With a huge worldwide installation base and proven track record, these models are consistently granting satisfactions for everyday work.



S290LS

S290LS model comes with a fiber laser source catered for use with metallic and plastic materials. Reliable and cost efficient fiber laser allows direct marking on metallic and plastic materials which is not possible with CO₂ lasers. The small beam size enables creation of the most delicate graphics and leaves a permanent mark on metallic materials.



MG380Hybrid

MG380Hybrid is equipped with RF driven and DC excited dual CO₂ laser tubes at the same time which allow user to produce superior engraving and cutting work piece. All in one machine save your storage space and make your profit maximum. The GCC LaserPro users always have an edge over the others with numerous uniquely innovative and user friendly features.



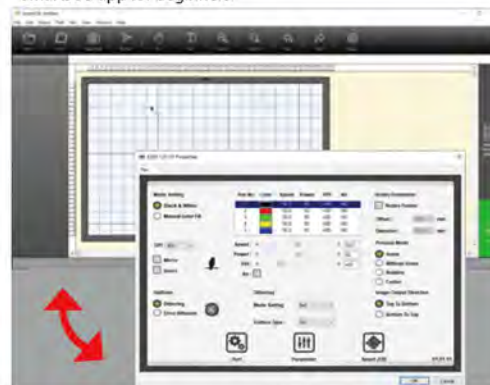
E200



Simple but Professional

Multifunction user interface for both beginners and advance users.

SmartJOB app for beginners.



GCC driver for advanced users.

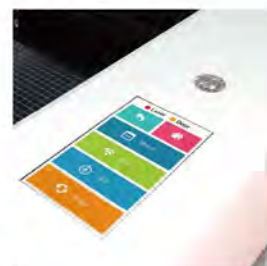
Standard Water Chiller for Long-time Working

E200 desktop laser engraver comes with a standard water chiller to ensure machine efficiency.



7" Large Touch Panel

With colorful intuitive 7" touchscreen interface, E200 desktop laser engraver can bring your inspiration to life.



High Throughput for Unlimited Imagination

20ips Processing speed with DC servo motor to boost productivity while maintaining precision.



Unmatchable Output Quality

E200 takes your engraving and cutting to a level beyond other desktop laser engravers.



Live Camera Preview

E200's on board camera allows you to preview your design to make positioning simple and easy.



Stamp Mode with Shoulder Level Function

E200 stamp mode with shoulder level function enables you to produce a professional stamp easily.



Specification	E200
Work Area	20 x 12.9 in. (510 x 330 mm)
Maximum Part Size (WxLxH)	20.4 x 13.4 x 0.78 in.(520 x 340 x 20 mm) (with grid cutting table) 19.8 x 13.4 x 2.99 in.(505 x 340 x 76 mm) (remove grid cutting table)
CCD Camera	Standard, accurate within 0.16 in (4 mm)
Working Table	Standard grid cutting table
Dimensions	36 x 30.7 x 11.8 in. (915 x 780 x 300 mm)
Laser Wattage	DC driven glass laser tube: 40W
Laser Source	Sealed CO ₂ laser
Drive	Closed-loop DC Servo Control
Maximum Working Speed	20 IPS
Maximum Cutting Thickness	10 mm
Speed Control	Adjustable from 0.1~100% (Up to 5 color-linked speed settings per job)
Power Control	Adjustable from 0~100% (Up to 5 color-linked power settings per job)
DPI	Available 250,380,500,760,1000
Focus Lens	Standard 1.5"
Computer Interface	Full-speed USB 2.0 port, 10 Base-T Ethernet
Compatible Operating Systems	MS Windows, MAC OSX 10.6-10.15**
Control Panel	7" touch screen
Connection	WiFi, Ethernet, USB
Water Chiller	Standard
Safety	Class I Laser Product Complies with EN60825-1 Class II Laser Product Complies with CDRH
Facility Requirements	
Electrical	100-240VAC, 50-60Hz Auto Switching, Max. 15A
Air Exhaust System	External exhaust system with minimum flow rate 300 m ³ /h (10594 ft ³ /min) is required,2,500PA negative pressure (PURE-AIR PA-300 @ 4" exhaust port)

* Speed is not equal to throughput. See dealer or visit www.gccworld.com for more detail.
Specifications are subject to change without prior notice.

Optional Items



Air Compressor



Fume Extractor



Rotary Attachment

S400



Perfect Cutting and Engraving Throughput

Maximum 140ips processing speed with powerful DC servo motor to boost productivity while maintaining precision.



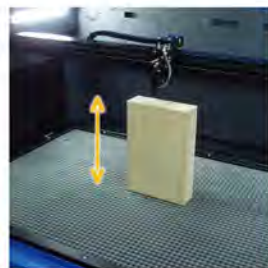
Dust Prevention

Incorporating metal panels to protect key components, but not seal entirely to ease any difficulty of maintenance.



Higher Working Depth

Depth of Z-axis up to 11" (280 mm) thick.



SmartFLOW™ Technology

SmartFLOW™ invention creates a perfect Air Flow to enhance the vacuum effect and bring out the dust completely while working.



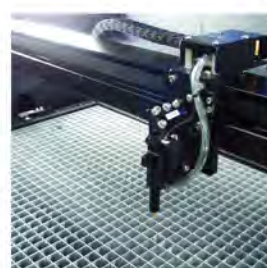
Intuitive Touch Screen

Operation is easy and intuitive with the 4" touchscreen.



SmartSEAL™ Technology

New gantry design to prevent dust, the easy take-off cover also makes the maintenance a lot easier.



SmartLID Easy Access

Easy access design simplifies the maintenance job.



User Friendly Driver Interface

Starting from end users' view, GCC driver evolves into a brand new design with the intuitive interface to favor each user.



Specification		S400			
		CO ₂	Fiber	Dual	
Laser Model					
Work Area		40 x 24 in. (1016 x 610 mm)			
Max. Part Size (W x L x H)	All doors closed	41.4 x 25.4 x 11 in. (1053 x 647 x 280 mm)			
	All door open	41.4 x ∞ x 11 in. (1053 x ∞ x 280 mm)			
Table Size		Standard Grid Cutting Table 40.1 x 24.1 in. (1019 x 613 mm)			
Dimensions (W x L x H)		56.7 x 34.5 x 41.3 in. (1440 x 900 x 1048 mm)			
Weight	CO ₂ 30W~40W	260 kg / 573 lb			
	CO ₂ 60~100W	270 kg / 595 lb			
	Fiber 20W~60W	260 kg / 573 lb			
Laser Source		10.6-μm CO ₂ laser 40~120W	9.3-μm CO ₂ laser 60W	Fiber laser 20 / 30 / 60W	10.6-μm CO ₂ laser: 40 to 100W 9.3-μm CO ₂ laser: 60W Fiber laser: 20 / 30 / 60W
Cooling		Air-cooled, Operating environment temperature 15°- 30°C (59°- 86°F)			
Drive		Closed-loop DC servo control			
Maximum Motor Speed		140 IPS			
Speed Control		Adjustable from 0.1~100% (Up to 16 color-linked speed settings per job)			
Power Control		Adjustable from 0~100% (Up to 16 color-linked power settings per job)			
Engraving Capability		256-level gray scale image processing capability			
Distance Accuracy		0.254 mm or 0.1% of move, whichever is greater			
Z-Axis Movement		Automatic			
Focus Lens		CO ₂ : Standard 2.0" (Optional 1.5", 2.5" & 4.0") Fiber: Standard 2.0" (Optional 4.0") Dual (CO ₂ +Fiber): Standard 2.0" (Optional 3.0" & 4.0")			
Resolution (DPI)		Available 125, 250, 300, 380, 500, 600, 760, 1000, 1500			
Computer Interface		10 Base-T Ethernet USB Type-A 2.0 – For USB storage (Max. 32GB capacity, FAT file system) USB Type-B 2.0 – For connecting with the computer			
Memory Size		32M (4M Reserved for System Files)			
Compatible Operating System		MS Windows 64 Bit			
Control Panel		Touch Screen			
Safety		Class I Laser Product Complies with EN60825-1:2014, EN ISO 13849-1:2015 Class II Laser Product Complies with CDRH for CO ₂ Laser Class 3R Laser Product Compliant with CDRH for Fiber & Dual Laser sources 2006/42/EC Machinery Directive Compliance Class 4 Laser Product Compliant with CDRH with the optional pass-through door module			
Operating Voltage		Below 80Watt, 100-240VAC, 50/60HZ Auto Switching, max. 15A 80Watt and above, 200-240VAC, 50/60HZ Auto Switching, max. 15A			
Fume Extraction System		External exhaust system with minimum flow rate 800m ³ /h (CFM 471 ft ³ /h) is required, 2.3kPA negative pressure (Pure-Air PA-1500FS @ 4" exhaust port)			

** Speed is not equal to throughput. See dealer or visit www.gccworld.com for more detail. Specifications are subject to change without prior notice.

*** Please use certified brands by GCC for LaserPro USB storage, kindly refer to GCC User Manuals for more details.

■ Spirit Series (Spirit, Spirit LS, Spirit GLS Hybrid)

Drag-N-Play

An exceptionally innovative and user-friendly feature based on servomotor technology simplifies operations and shortens setup time. Simply hand drag the lens carriage to the desired position to be engraved and press the start button to commence job.



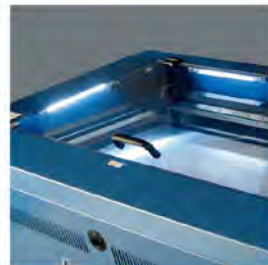
Pass-through Front / Rear Doors (Optional)

A design with doors on both ends to accommodate extremely long working pieces without the need for a screwdriver.



SmartLIGHT

Built-in LED light module illuminates the working space and makes every engraving detail easy to see.



Key Switch & Emergency Stop

Key switch safeguards the machine from unauthorized use. Prominent emergency button located on the top of the machine allows operators to stop the laser and the motion carriage immediately to provide a safe operating environment.



SmartCENTER™ (Patented)

The super user-friendly SmartCENTER™ function helps end users to easily and automatically locate the center point of objects of any shape vastly eliminating tedious setup time.



SmartPIN™ AutoFocus (Patented)

The plug-and-play probe design makes focusing a one-touch process and provides the accuracy and precision required for optimum quality in the lasing process.



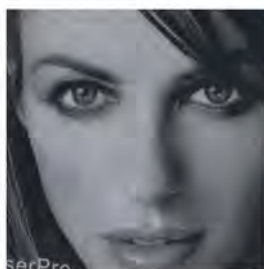
Rigid and Reliable Construction

Rigid and stable chassis construction ensures consistent output quality under high speed movement.



Truelmage™ Engraving Technology (Patented)

Patented Truelmage feature smooths the image engraving edge automatically by employing a unique laser firing algorithm to present image engraving in its most vivid form.



Specification		Spirit Series	
Model Name		Spirit	Spirit LS
Work Area		25 x 18 in. (640 x 460 mm) Extendable to 29 x 18 in. (740 x 460 mm)	
Maximum Part Size (W x L x H)	All doors closed	30 x 19 x 6.5 in. (762 x 482.6 x 165 mm)	
	All doors open	30 x ∞ x 6.5 in. (762 x ∞ x 165 mm)	
Table Size		31.1 x 20.9 in. (790 x 530 mm)	
Dimensions (W x L x H)		44.3 x 28.3 x 39.6 in. (1125 x 720 x 1005 mm)	
Laser Source		12 to 100W 10.6-µm sealed CO2 Laser / 20W & 60W 9.3-µm sealed CO2 Laser	
Cooling		Air-cooled, Operating environment temperature 15° - 30°C (60° - 86°F)	
Drive		Closed-loop DC Servo Control	
Maximum Speed*		60 IPS	80 IPS**
Speed Control		Adjustable from 0.1-100% (Up to 16 color-linked speed settings per job)	
Power Control		Available from 0-100% (UP to 16 colors linked power setting per job)	
Engraving Capability		256-level gray scale image processing capability	
Distance Accuracy		0.254 mm or 0.1% of move, whichever is greater	
Z-Axis Movement		Automatic	
Focus Lens		Standard 2.0", optional 1.5", 2.5" & 4.0" available	
Resolution (DPI)		Available 125, 250, 300, 380, 500, 600, 760, 1000, 1500	
Computer Interface		10 Base-T Ethernet USB Type-A 2.0 – For USB storage (Max. 32GB capacity, FAT file system) USB Type-B 2.0 – For connecting with the computer	
Memory Size		32M (4M Reserved for System Files)	
Compatible Operating Systems		MS Windows	
Display Panel		4-line LCD panel showing current file name, total working time, laser poser, engraving speed, file(s) loaded into memory buffer, setup and diagnostic menus	
Safety		Class I Laser Product Compliant with EN60825, Class II Laser Product Compliant with CDRH 2006/42/EC Machinery Directive Compliance Class 4 Laser Product Compliant with CDRH with the optional pass-through door module	
Operation Voltage		Laser below 80Watt, 100-240VAC, 50-60Hz Auto Switching, Max. 15A; Laser 80Watt and above, 200-240VAC, 50-60Hz, Max. 15A	
Fume Extraction System		External exhaust system with minimum flow rate 640m³/h (CFM 377 ft³/h) is required, 2.3kPA negative pressure (Pure-Air PA-1000FS @ 4" exhaust port)	

* Speed is not equal throughput. See dealer or visit <http://www.GCCworld.com> for more details.

** Throughput value represents the Max. number of 8 in. x 10 in. 500DPI raster jobs that can be done per hour.

Δ Specifications are subject to change without prior notice.

Spirit GLS Hybrid



CO₂ & Fiber Hybrid Lasers

GCC Hybrid technology allows to install CO₂ & Fiber dual lasers in one system to expand your business from organic materials processing to direct metal engraving.



Pass-through Front and Rear Doors (Optional)

Optional front and rear door design enables loading of extremely long working pieces.



DuraGuide

Systematic and reliable motion system embedded with strong mechanical framework, reinforced Kevlar belts, and accurate servomotor control technology to deliver superb output quality under rapid movement.



SmartACT™ (Patented)

Ground-breaking technology that reduces the ramping process, the job running time, which translates into higher productivity.



Astonish 3D Engraving

GCC LaserPro integrates laser firing control and image processing technology to create a 3D engraving function, the laser system assigns up to different laser powers to 200 levels of grayscale in the image to make the spectacular 3D effects with different slopes.



Real Pointer Alignment Feature

Extra beam combiner to align red pointer with laser beam, What You See is What You Get.



SmartPIN AutoFocus (Patented)

The plug-and-play probe design makes focusing a one-touch process and provides the accuracy and precision required for optimum quality in the lasing process.



Innovative Software Features

Unbeatable print driver features SmartCENTER™, Defocus by pen, Programmable Air Assist TrueImage, Vector Path Optimization, allow easy set up and achieve marvelous output quality.



Specification	Spirit GLS Hybrid	
Model Name	Spirit GLS Hybrid	
Work Area	34 x 24 in. (860 x 610 mm) Extendable to 38 x 24 in. (965 x 610 mm)	
Maximum Part Size (W x L x H)	All doors closed	39 x 25 x 7 in. (990 x 635 x 177 mm)
	All doors open	39 x ∞ x 7 in. (990 x ∞ x 177 mm)
Table Size	40.3 x 27.7 in. (1025 x 705 mm)	
Dimensions (W x L x H)	53.7 x 34.6 x 39.7 in. (1365 x 880 x 1010 mm)	
Laser Source	30 to 100W 10.6-μm sealed CO ₂ Laser / 20W & 60W 9.3-μm sealed CO ₂ Laser	
Cooling	Air-cooled, Operating environment temperature 15°- 30°C (60°- 86°F)	
Drive	Closed-loop DC Servo Control	
Maximum Speed*	80 IPS**	
Speed Control	Adjustable from 0.1-100% (Up to 16 color-linked speed settings per job)	
Power Control	Available from 0~100% (UP to 16 colors linked power setting per job)	
Engraving capability	256-level gray scale image processing capability	
Distance Accuracy	0.254 mm or 0.1% of move, whichever is greater	
Z-Axis Movement	Automatic	
Focus Lens	Standard 2.0" (Optional 3.0" & 4.0")	
Resolution (DPI)	Available 125, 250, 300, 380, 500, 600, 760, 1000, 1500	
Computer Interface	10 Base-T Ethernet USB Type-A 2.0 – For USB storage (Max. 32GB capacity, FAT file system) USB Type-B 2.0 – For connecting with the computer	
Memory Size	32M (4M Reserved for System Files)	
Compatible Operating Systems	MS Windows	
Display Panel	4-line LCD panel showing current file name, total working time, laser poser, engraving speed, file(s) loaded into memory buffer, setup and diagnostic menus	
Safety	Class I Laser Product Compliant with EN60825 Class 3R Laser Product Compliant with CDRH 2006/42/EC Machinery Directive Compliance Class 4 Laser Product Compliant with CDRH with the optional pass-through door module	
Operation Voltage	Below 80Watt, 100-240VAC, 50/60HZ Auto Switching, max. 15A 80Watt and above, 200-240VAC, 50/60HZ Auto Switching, max. 15A	
Fume Extraction System	External exhaust system with minimum flow rate 800m ³ /h (CFM 471 ft ³ /h) is required, 2.3kPA negative pressure (Pure-Air PA-1500FS @ 4" exhaust port)	

* Speed does not equal to throughput. See dealer or visit www.GCCworld.com for more details.
 Δ Specifications are subject to change without prior notice.

Venus II & Mercury III



AutoFocus (Patented)

Patented AutoFocus Gauge adjusts the laser engraver to the precise focal point on the engraving area automatically. The AutoFocus is the most effective lens-focusing tool that prevents human error when exact measurement of distance from the surface of the working material is needed.



Pass-through Front / Rear Doors (Optional)

A design with doors on both ends to accommodate extremely long working pieces without the need for a screwdriver. *(Mercury III only)



Drag-N-Play

An exceptionally innovative and user-friendly feature based on servomotor technology simplifies operations and shortens setup time. Simply hand drag the lens carriage to the desired position to be engraved and press the start button to commence job.



Job Preview Function

The GCC LaserPro laser engraver all series printer driver features a job preview function that previews graphics before the official laser printing process. One of the highlights of this feature is that it provides an estimated working time*.



Unique Table for Making Stamps

The 2" diameter hole is provided for stamps with a longer body. The size of this pit fits to your stamp sample perfectly. Just position the stamp into the hole. Longer stamps can be made with ease. *(Venus II only)



Easy to Use Control Panel

A control panel with coherent hot-key design and graphical icon displays that allows you to change laser parameter settings, set jobs to repeat unlimited times, queue jobs, delete jobs, and more.



Key Switch Emergency Stop

Key switch safeguards the machine from unauthorized use. Prominent emergency button located on the top of the machine allows operators to stop the laser and the motion carriage immediately to provide a safe operating environment.



DC Servo Motor

A Closed-loop DC servo motor can deliver greater continuous shaft power at higher speeds than a stepper of the same frame size. In addition, it can also give far greater accuracy due to the continuous movement, instead of constant stopping and starting.



Specification	Venus II
Laser Source	12W Sealed CO ₂ Laser
Cooling	Air-cooled, Operating environment temperature 15° - 30°C (60° - 86°F)
Work Area	11.8 x 8.2 in. (300 x 210 mm)
Max. Part Size (W x L x H)	14.2 x 11.8 x 2.8 in. (360 x 300 x 70 mm)
Dimensions (W x L x H)	24.4 x 17.1 x 18.1 in. (620 x 435 x 460 mm)
Weight	32 Kg / 70 lb
Drive	Closed-loop DC Servo Control
Maximum Speed*	20 IPS
Speed Control	Adjustable from 0.1 to 100% (Up to 16 color-linked speed settings per job)
Power Control	Adjustable from 0 -100% (Up to 16 color-linked power settings per job)
Engraving capability	256-level gray scale image processing capability
Distance Accuracy	0.254 mm or 0.1% of move, whichever is greater
Z-Axis Movement	Automatic
Focus Lens	Standard 1.5", optional 2.0" available
Resolution (DPI)	Available 200, 250, 300, 500, 600, 1000
Computer Interface	10 Base-T Ethernet USB Type-A 2.0 – For USB storage (Max. 32GB capacity, FAT file system) USB Type-B 2.0 – For connecting with the computer
Memory Size	32M (4M Reserved for System Files)
Compatible Operating Systems	MS Windows
Display Panel	4-line LCD panel showing current file name, total working time, laser power, engraving speed, file(s) loaded into memory buffer, setup and diagnostic menus
Safety	Class I Laser Product Complies with EN60825 Class II Laser Product Complies with CDRH
Operation Voltage	100- 240VAC, 50-60Hz Auto Switching, Max. 7A
Fume Extraction System	External exhaust system with minimum flow rate 215m ³ /h (CFM 125 ft ³ /h) is required, 10kPA negative pressure (Purex GCC 400 @ 2" exhaust port)

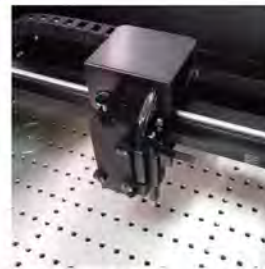
Specification	Mercury III
Laser Source	12, 30, 40, 60W Air-cooled, Operating environment temperature 15° - 30°C (60° - 86°F)
Cooling	Air-cooled, Operating environment temperature 15° - 30°C (60° - 86°F)
Work Area	25 x 18 in. (635 x 458 mm)
Maximum Part Size (W x L x H)	All doors closed: 27 x 19 x 6.5 in. (685 x 482 x 165 mm) All doors open: 27 x ∞ x 6.5 in. (685 x ∞ x 165 mm)
Table Size	31.1 x 20.9 in. (790 x 530 mm)
Dimensions (W x L x H)	44.3 x 28.3 x 39.6 in. (1125 x 720 x 1005 mm)
Drive	Closed-loop DC Servo Control
Speed Control	Adjustable from 0.1-100% (Up to 16 color-linked speed settings per job)
Power Control	Adjustable from 0 -100% (Up to 16 color-linked power settings per job)
Engraving capability	256-level gray scale image processing capability
Distance Accuracy	0.254 mm or 0.1% of move, whichever is greater
Z-Axis Movement	Automatic
Focus Lens	Standard 2.0", optional 1.5", 2.5" & 4.0" available
Resolution (DPI)	Available 125, 250, 300, 380, 500, 600, 760, 1000, 1500
Computer Interface	10 Base-T Ethernet USB Type-A 2.0 – For USB storage (Max. 32GB capacity, FAT file system) USB Type-B 2.0 – For connecting with the computer
Memory Size	32M (4M Reserved for System Files)
Compatible Operating Systems	MS Windows
Display Panel	4-line LCD panel showing current file name, total working time, laser power, engraving speed, file(s) loaded into memory buffer, setup and diagnostic menus.
Safety	Class I Laser Product Compliant with EN60825, Class II Laser Product Compliant with CDRH 2006/42/EC Machinery Directive Compliance Class 4 Laser Product Compliant with CDRH with the optional pass-through door module
Operation Voltage	100-240VAC, 50-60Hz Auto Switching, Max. 15A
Fume Extraction System	External exhaust system with minimum flow rate 640m ³ /h (CFM 377 ft ³ /h) is required, 2.3kPA negative pressure (Pure-Air PA-1000FS @ 4" exhaust port)

** File transmission at USB 2.0 Full Speed rate.
Δ Specifications are subject to change without prior notice.

C180II

Closed-loop DC Servo Motor and Reliable Motion System

The C180II utilizes high performance Closed-loop DC servo motors for precise and fast carriage movement combined with a reliable motion system to produce exceptionally accurate outputs.



SmartPRINT™ (Optional)

The GCC LaserPro SmartPRINT™ software features powerful functions, an intuitive interface and embedded GCC LaserPro laser parameter setting for both MAC and Windows users.



Dust Protection Design (Patented)

Dust protection covers around working table to provide marvelous exhaust vacuum together with Smart Vacuum design, and prevention dust accumulated on laser system.



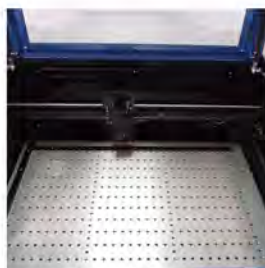
Simple and Intuitive Control Panel

A user-friendly menu-driven interface system simplifies operation. Hot keys design and job status display facilitates your work and makes it clear and easy to carry out.



Built-in SmartBOX™ (Patented)

The built-in SmartBOX™ feature produces a downward pulling force to keep light items in place creating a stable working environment.



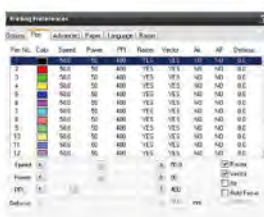
Astonish 3D Engraving

GCC LaserPro integrates laser firing control and image processing technology to create a 3D engraving function, the laser system assigns up to different laser powers to 200 levels of grayscale in the image to make the spectacular 3D effects with different slopes.



SmartCENTER™ (Patented)

The super user-friendly SmartCENTER™ function helps end users to easily and automatically locate the center point of objects of any shape vastly eliminating tedious setup time.



Innovative Windows Driver

Directly output from familiar graphic software like Illustrator and CorelDraw through GCC print driver. The innovative driver featuring powerful functions, SmartCENTER, Air by Pen, Defous by Pen, Bridge Cutting and more to reduce setup time.

Specification	C180II
Work Area	18 x 12 in. (458 x 305 mm)
Maximum Part Size (W x L x H)	19.8 x 12.2 x 6 in. (503 x 310 x 152.4 mm)
Table Size	20.4 x 14.7 in. (520 x 375 mm)
Dimensions (W x L x H)	29.1 x 30.7 x 16.1 in. (740 x 780 x 410 mm)
Laser Source	12 to 40 Watt Sealed CO ₂ Laser
Cooling	Air-cooled, Operating environment temperature 15° - 30°C (60° - 86°F)
Drive	Closed-loop DC Servo Control
Maximum Speed**	40 IPS
Speed Control	Adjustable from 0.1~100% (Up to 16 color-linked speed settings per job)
Power Control	Adjustable from 0~100% (Up to 16 color-linked power settings per job)
Engraving Capability	256-level gray scale image processing capability
Distance Accuracy	0.254 mm or 0.1% of move, whichever is greater
Z-Axis Movement	Automatic
Focus Lens	Standard 2.0", optional 1.5" available
Resolution (DPI)	Available 125, 250, 300, 380, 500, 600, 760, 1000
Computer Interface	10 Base-T Ethernet USB Type-A 2.0 – For USB storage (Max. 32GB capacity, FAT file system) USB Type-B 2.0 – For connecting with the computer
Memory Size	32M (4M Reserved for System Files)
Compatible Operating Systems	MS Windows
Display Panel	4-line LCD panel showing current file name, total working time, laser poser, engraving speed, file(s) loaded into memory buffer, setup and diagnostic menus
Safety	Class I Laser Product Compliant with EN60825, Class II Laser Product Compliant with CDRH 2006/42/EC Machinery Directive Compliance
Operation Voltage	100-240VAC, 50-60Hz Auto Switching, Max. 15A
Fume Extraction System	External exhaust system with minimum flow rate 215m ³ /h (CFM 125 ft ³ /h) is required, 10kPA negative pressure (Purex GCC 400 @ 2" & 4" exhaust port)

* File transmission at USB 2.0 Full Speed rate.

** Speed is not equal throughput. See dealer or visit <http://www.GCCworld.com> for more details.

Δ Specifications are subject to change without prior notice.

S290LS



DuraGuide

Systematic and reliable motion system embedded with strong mechanical framework, reinforced Kevlar belts, and accurate servomotor control technology to deliver superb output quality under rapid movement.



Pass-through Front / Rear Doors (Optional)

A design with doors on both ends to accommodate extremely long working pieces without the need for a screwdriver.



SmartCENTER™ (Patented)

The super user-friendly SmartCENTER™ function helps end users to easily and automatically locate the center point of objects of any shape vastly eliminating tedious setup time.

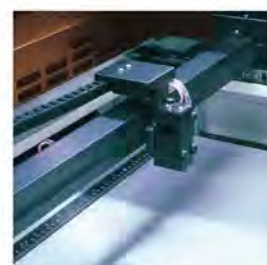


Multiple Laser Waveforms

Waveform function allows greater control over laser pulse parameters such as laser pulse shape, pulse energy and pulse duration which can lead to more efficient and effective processing. The benefits of a waveform are that it allows customers to adjust pulse conditions to optimize marking, micromachining and applications.

Rotary Chuck (Optional)

The rotary chuck for LaserPro S290LS is a handy tool used for engraving on cylindrical or spherical objects. In addition to the standard X, Y, Z axis, the rotary chuck allows for a fourth axis which rotates the object 360° to allow for engraving on cups, wine glasses, and even spherical objects.



Precise Closed-loop DC Servo Motor

The S290LS utilizes a high performance Closed-loop DC servo motor for precise and fast carriage movement combined with a reliable motion system and the result is exceptionally accurate outputs.

RoHS Compliance

As a market leader and an environment-friendly product manufacturer, GCC is committed to make all-out efforts to preserve the global environment. Our products are compliant with the European Parliament Directive 2002/95/EC, Restriction of Hazardous Substances (RoHS).



Programmable Origin Modes

Easy to use position modes allow the operator an effortless way to setup a job. Repetitive workflows can be drastically simplified by relocating the origin position to any desired location.

Specification	S290LS				
Model Name	S290LS-20SHS	S290LS-20JFL	S290LS-30JFL	S290LS-50JFL	S290LS-60JFL
Laser Source	Fiber 20W		Fiber 30W	Fiber 50W	Fiber 60W
Wavelength	1064 nm				
Laser M ²	<1.3	<1.3	<1.3	<1.8	<1.8
Laser Peak Power (kW)	>7	>4.5	>5.5	>8	>7.8
Work Area	25 x 18 in. (640 x 460 mm) extendable to 29 x 18 in. (740 x 460 mm)				
Maximum Part Size (W X L X H)	All doors closed	31.5 x 22.4 x 6.5 in. (800 x 570 x 165 mm)			
	All doors open	31.5 x ∞ x 6.5 in. (800 x ∞ x 165 mm)			
Table Size	31.1 x 20.9 in. (790 x 530 mm)				
Dimensions (W X L X H)	44.3 x 28.3 x 39.6 in. (1125 x 720 x 1005 mm)				
Cooling	Air Cool				
Drive	Closed-loop DC Servo Control				
Maximum Speed*	80 IPS				
Speed Control	Adjustable from 0.1~100% (Up to 16 color-linked speed settings per job)				
Power Control	Adjustable from 0~100% (Up to 16 color-linked power settings per job)				
Engraving capability	256-level gray scale image processing capability				
Distance Accuracy	0.254 mm or 0.1% of move, whichever is greater				
Z-Axis Movement	Automatic				
Focus Lens	Standard 4.0", optional 2.0" available				
Resolution (DPI)	Available 125, 250, 300, 380, 500, 600, 760, 1000, 1500, 3000				
Computer Interface	10 Base-T Ethernet USB Type-A 2.0 – For USB storage (Max. 32GB capacity, FAT file system) USB Type-B 2.0 – For connecting with the computer				
Memory Size	32M (4M Reserved for System Files)				
Display Panel	4-line LCD panel showing current file name, total working time, laser power, engraving speed, file(s) loaded into memory buffer, setup and diagnostic menus				
Safety	Class I Laser Product Compliant with EN60825 Class 3R Laser Product Compliant with CDRH 2006/42/EC Machine Directive Compliance Class 4 Laser Product Compliant with CDRH with the optional pass-through door module				
Operation Voltage	100V-240VAC, 50/60Hz Auto switching, MAX. 8A				
Fume Extraction System	External exhaust system with minimum flow rate 640m ³ /h (CFM 377 ft ³ /h) is required, 2.3kPA negative pressure (Pure-Air PA-1000FS @ 4" exhaust port)				

* Speed is not equal throughput. See dealer or visit <http://www.GCCworld.com> for more details.

△ Specifications are subject to change without prior notice.

MG380Hybrid



Superb Engraving and Cutting Quality

Embrace total solution in one machine. Innovative GCC LaserPro MG380Hybrid deliver superior engraving and cutting result by its high end technology.



Pass-through Front / Rear Doors (Optional)

This convenient front and rear door design enables operators to load extremely long working pieces.



Emergency Stop

Big red button located on the top of the machine allows operators to stop the laser and the motion carriage immediately to provide a highly safe operational environment.



Programmable Origin

Easy-to-use position modes allow the operator an effortless way to setup a job with Drag-N-Engrave. Repetitive workflows can be drastically simplified by relocating the origin position to any desired location.



Precise Closed-loop DC Servo Technology

The GCC LaserPro MG380Hybrid utilizes a high speed closed-loop DC servo motor for precise and fast carriage movement to ensure exceptionally accurate cutting outputs.



Autofocus

Patented Autofocus adjusts the laser engraver to the precise focal point on the engraving area automatically. The Autofocus is the most effective lens-focusing tool that prevents human error.



AAS Contour Cutting Device (patented)(Optional)

Developed by LaserPro, AAS is an exceptionally user-friendly operation which offers accurate and faultless contour cutting by automatically tracking the position of graphics.



SmartBOX™ (Optional)

This innovative design is composed of a ventilation box, a honeycomb table and easily rearrangeable magnetic supporting pieces. The SmartBOX™ provides great cutting quality and remarkably enhances air extraction.



Specification	MG380Hybrid	
	MG380Hybrid-12100	MG380Hybrid-30100
Model Name	MG380Hybrid-12100	MG380Hybrid-30100
Wattage	RF driven metal laser tube: 12W DC driven glass laser tube: 100W	RF driven metal laser tube: 30W DC driven glass laser tube: 100W
Laser Source	Sealed CO ₂ Laser	
Cooling	RF driven metal laser tube: Air Cooled / DC driven glass laser tube: Water Cooled	
Work Area	38 x 24 in. (960 x 610 mm)	
Maximum Part Size (W x L x H)	All doors closed All doors open	41 x 25 x 6.5 in. (1041 x 635 x 165 mm) 41 x ∞ x 6.5 in. (1041 x ∞ x 165 mm)
Table Size	42.7 x 29.5 in. (1085 x 750 mm)	
Dimensions (W x L x H)	68.9 x 48.9 x 40 in. (1750 x 1242 x 1017 mm)	
Drive	Closed-loop DC Servo Control	
Maximum Speed*	40 IPS	
Speed Control	Adjustable from 0.1~100% (Up to 16 color-linked speed settings per job)	
Power Control	Adjustable from 0~100% (Up to 16 color-linked power settings per job)	
Distance Accuracy	0.254 mm or 0.1% of move, whichever is greater	
Resolution (DPI)	Available 125, 250, 300, 380, 500, 600, 760, 1000	
Z-Axis Movement	Automatic	
Focus Lens	Standard 2.0", optional 1.5", 3"	
Computer Interface	10 Base-T Ethernet USB Type-A 2.0 – For USB storage (Max. 32GB capacity, FAT file system) USB Type-B 2.0 – For connecting with the computer	
Memory Size	32MB standard	
Engraving capability	256-level gray scale image processing capability	
Safety	Class I Laser Product Compliant with EN60825, Class II Laser Product Compliant with CDRH, 2006/42/EC Machinery Directive Compliance Class 4 Laser Product Compliant with CDRH with the optional pass-through door module	
Operation Voltage	200-240VAC, 50/60Hz auto switching, Max. 8A	
Water Chiller	External water chiller required	
Fume Extraction System	with minimum flow rate 800m ³ /h (CFM 471 ft ³ /h) is required, 2.3kPA negative pressure (Pure-Air PA-1500FS @ 4" & 8" exhaust port)	

* Speed is not equal throughput. See dealer or visit <http://www.GCCworld.com> for more details.

** File transmission at USB 2.0 Full Speed rate.

Δ Specifications are subject to change without prior notice.

◆TW Patent I430864

◆US Patent 8,748,775 B2

Laser Cutting Systems

GCC LaserPro laser cutters offer an ideal cutting and engraving solution for industrial users. Laser cutters are equipped with sealed Fiber / CO₂ laser tubes with reliable quality, providing high power wattage for quality cutting capability and high throughput.

X-Series
(X252, X380, X500III Pro)

The GCC LaserPro X-series is the best economical choice for laser cutting. 3 models are available from the X-series: X252, X380, and the X500III Pro.



X-series (X252RX,X380RX,X500III Pro)

Outstanding Cutting Capability

X Series delivers high cutting quality with GCC LaserPro's unique laser firing control technology.



Pass-through Front / Rear Doors (Optional)

A design with doors on both ends to accommodate extremely long working pieces.

*Pass-through Material Thickness:
X252RX & X380RX:6.5 inch.
X500III Pro:1inch.



FMC 280

Compact size high power fiber laser engraving and cutting system, GCC LaserPro delivers an easy way to operate fiber laser cutting system which yields spectacular cutting edges. The FMC 280 is a cutting specialist engineered for performance and produces excellent output quality. Innovative features developed from GCC LaserPro's years of experience makes the FMC 280 the most user-friendly system on the market.



T500

Developed on the basis of GCC LaserPro's accumulated technology with new powerful motion system. GCC LaserPro T500 is capable of exceptional 3D engraving quality and cutting at high speed which make it a high ROI laser system on the market. Equipped powerful 200W laser tube allow user to deliver clear and fine cutting result. GCC LaserPro T500 is a dedicated design to fulfill your cutting and engraving needs in one machine with high throughput and superb quality.



Key Switch & Emergency Stop

Key switch safeguards the machine from unauthorized use. Prominent emergency button located on the top of the machine allows operators to stop the laser and the motion carriage immediately to provide a safe operating environment.



Precise Closed-loop DC Servo Motor

The GCC LaserPro X252RX / X380RX / X500III Pro utilizes a high speed closed-loop DC servo motor for precise and fast carriage movement to ensure exceptionally accurate cutting outputs. (For X252RX / X380RX / X500III Pro)



Unique Motion Guide

A unique motion guide is designed specially for X500III Pro by adopting a light weight and high strength structure, together with DC servo motor to provide first class stability and accuracy. (For X500III Pro)



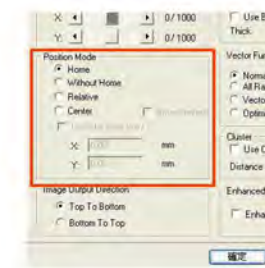
Job Preview Function

The GCC LaserPro laser engraver all series printer driver features a job preview function that previews graphics before the official laser printing process. One of the highlights of this feature is that it provides an estimated working time.



Programmable Origin Modes

Easy to use position modes allow the operator an effortless way to setup a job. Repetitive workflows can be drastically simplified by relocating the origin position to any desired location.





AAS Contour Cutting Device (patented) (Optional)

Developed by LaserPro, AAS is an exceptionally user-friendly operation which offers accurate and faultless contour cutting by automatically tracking the position of graphics. *N/A for x500III Pro.



■ FMC 280-Z1

Specification		X - series						
Model Name		X252RX		X380RX		X500III Pro		
Laser Source		80W	100W	80W	100W	100W	130W	150W
		Sealed CO ₂ Laser						
Cooling		Water Cooled						
Work Area		25 in. x18 in. (635 x 458 mm)		38 x 24 in. (960 x 610 mm)		51 x 36 in. (1300 x 916 mm)		
	w/o honeycomb table					51 x 36 in. (1300 x 916 mm)		
	with honeycomb table					50.3 x 35.2 in. (1280 x 896 mm)		
Maximum Part Size (W X L X H)	w/o Cutting Table					52.9 x 36.0 x 2.1 in. (1346 x 916 x 55 mm)		
	Doors Open	27 x 19 x 6.5 in. (685 x 482 x 165 mm)		41 x 25 x 6.5 in. (1041 x 635 x 165 mm)		52.9 x ∞ x 1.1 in. (1346 x ∞ x 30 mm)		
	Doors Closed	27 x ∞ x 6.5 in. (685 x ∞ x 165 mm)		41 x ∞ x 6.5 in. (1041 x ∞ x 165 mm)				
	with Honeycomb Cutting Table					48.8 x 32.2 x 1.1 in. (1240 x 818 x 30 mm)		
	with Aluminum Cutting Table					52.1 x 35 x 1.1 in. (1325 x 889 x 30 mm)		
Table Size		31.1 x 20.9 in. (790 x 530 mm)		42.7 x 29.5 in. (1085 x 750 mm)				
Dimensions (W X L X H)		64.9 x 36.6 x 40.9 in. (1650 x 930 x 1040 mm)		70.8 x 42.9 x 40 in. (1800 x 1092 x 1017 mm)		74.8 x 55.1 x 47.2 in. (1900 x 1400 x 1200 mm)		
Drive		Closed-loop DC Servo Control						
Maximum Speed*		40 IPS						
Speed Control		Adjustable from 0.1~100% (Up to 16 color-linked speed settings per job)						
Power Control		Adjustable from 0~100% (Up to 16 color-linked power settings per job)						
Distance Accuracy		0.254 mm or 0.1% of move, whichever is greater						
Resolution (DPI)		Available 125, 250, 500, 1000			Available 125, 250, 300, 500, 600, 1000			
Engraving Capability		256-level gray scale image processing capability						
Z-Axis Movement		Automatic			Manual			
Computer Interface		10 Base-T Ethernet USB Type-A 2.0  - For USB storage (Max. 32GB capacity, FAT file system) USB Type-B 2.0  - For connecting with the computer						
Memory Size		32M (4M Reserved for System Files)						
Focus Lens		Standard 2.0", Optional 1.5", 3"			Standard 2", Optional 3"		Standard 3", Optional 2"	
Display Panel		4-line LCD panel showing current file name, total working time, laser power, engraving speed, file(s) loaded into memory buffer, setup and diagnostic menus.						
Safety		Class I Laser Product Compliant with EN60825 , Class II Laser Product Compliant with CDRH 2006/42/EC Machinery Directive Compliance Class 4 Laser Product Compliant with CDRH with the optional pass-through door module						
Operation Voltage		200-240VAC, 50/60Hz Auto Switching, MAX. 8A.			200-240VAC, 50/60Hz auto switching, Max.10A			
Water Chiller		External water chiller required						
Fume Extraction System		External exhaust system with minimum flow rate 640m ³ /h (CFM 377 ft ³ /h) is required, 2.3kPA negative pressure (Pure-Air PA-1000FS @ 4" exhaust port)	External exhaust system with minimum flow rate 800m ³ /h (CFM 471 ft ³ /h) is required, 2.3kPA negative pressure (Pure-Air PA-1500FS @ 4" & 8" exhaust port)	External exhaust system with minimum flow rate 2160m ³ /h (CFM 1273 ft ³ /h) is required, 2.5kPA negative pressure (Pure-Air PA-2400FS @ 8" exhaust port)				

* Speed is not equal throughput. See dealer or visit <http://www.GCCworld.com> for more details.

** File transmission at USB 2.0 Full Speed rate.

△ Specifications are subject to change without prior notice.



Unique Fiber Laser Source with Exquisite Cutting Capability

World leading fiber laser source with unique laser firing mode control meets variety metal sheets processing demand. Powerful cutting capability to handle up to 3mm thick stainless steel and high reflective metals (aluminum, copper) with clear edge now possible.



Capacitive Cutting Head with Autofocus

Precise capacitive cutting head design is able to keep fixed distance between cutting head and heat deformed material to obtain consistent cutting quality over the platform.



Drag-N-Play

The "Drag-N-Play" feature greatly reduces the complex set up procedures and allows the users to directly drag the lens carriage to the starting point of a job.



Key Switch & Emergency Stop

Key switch safeguards the machine from unauthorized use. Prominent emergency button located on the top of the machine allows operators to stop the laser and the motion carriage immediately to provide a safe operating environment.



DuraGuide™ Motion Design

Systematic and reliable motion system embedded with strong mechanical framework, reinforced Kevlar belts, and accurate servomotor control technology to deliver superb output quality. SmartSEAL™ dust protection design to keep dust from the motion system to reduce daily maintenance and prolong rail's life cycle.



Vivid Image Engraving

A user-friendly menu-driven interface system simplifies complex tasks. Hot keys design and job status display facilitates your work and makes it clear and easy to carry out.



Collecting Drawer



It is a convenient design for users to collect completed workpieces and clean scrap easily.



Rotary Chuck (Optional)

Handy rotary chuck to work with cylindrical metal objects like pipes, engineering parts and even spherical objects with tilt angle.



Specification		FMC 280-Z1
Model Name		FMC 280-Z1
Laser Source		1070nm fiber laser source, 1.5kW peak power
Work Area	Normal	28 x 14.5 in. (712 x 370 mm)
	With Thin Film Clamp	18 x 12 in. (458 x 305 mm)
Maximum Part Size (W X L X H)		30.9 x 21.3 x 4.7 in. (786 x 542 x 120 mm)
Dimensions		44.3 x 28.3 x 70.8 in. (1125 x 720 x 1800 mm)
Cooling		Air Cool
Drive		Closed-loop DC Servo Control
Maximum Motor Speed*		20 IPS
Speed Control		Adjustable from 0.1~100% (Up to 16 color-linked speed settings per job)
Power Control		Adjustable from 0~100% (Up to 16 color-linked power settings per job)
Distance Accuracy		0.254mm or 0.1% of move, whichever is greater
Z-Axis Movement		Automatic
Engraving Capability		256-level grayscale image processing capability
Resolution (DPI)		125, 250, 300, 380, 500, 600, 760, 1000, 1500, 3000
Computer Interface		10 Base-T Ethernet USB Type-A 2.0  - For USB storage (Max. 32GB capacity, FAT file system) USB Type-B 2.0  - For connecting with the computer
Memory Size		32M (4M Reserved for System Files)
Display Panel		4-line LCD panel showing current file name, total working time, laser power, engraving speed, file(s) loaded into memory buffer, setup and diagnostic menus
Safety		Class I Laser Product Compliant with EN60825 Class II Laser Product Compliant with CDRH 2006/42/EC Machinery Directive Compliance
Operation Voltage		200-240VAC, 50/60Hz Auto Switching, Max. 12A

* Speed is not equal to throughput. See dealer or visit www.GCCworld.com for more details.
 Δ Specifications are subject to change without prior notice.

T500



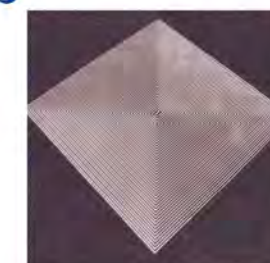
AC Servo Motor and Unique Motion

High torque and high speed AC servo motor assures long motor lifetime and high precision. A light weight and high strength structure together with AC servo motor and steel cord belt to provide first class stability and accuracy.



Excellent Speedy Scribing Quality

T-500 embrace extraordinary control system and rigid motion system allow user to create top-notch vector scribing quality with high speed.



Outstanding Cutting Capability

T500 delivers high cutting quality with LaserPro's unique laser firing control technology. Up to 200W output power options, GCC LaserPro T500 can cut through 1" (25 mm) acrylic in a single pass with a smooth finish and unmatched clear cutting edge.



Extension Table (Optional)

Extension roller tables help loading and unloading large piece work piece with ease, furthermore, it extends T500 maximum parts size to 1300 x 1500 mm (51" x 59").



Superior Engraving Quality

T500 persists with GCC LaserPro's excellent engraving capability. Having cutting and engraving capability in one product, no more time wasted on switching materials from cutting and engraving machine. Compare to conventional cutting product. It is difficult to have a good and consistent raster performance with large working area, but T500 can.



AAS Contour Cutting Device (Optional)

Developed by LaserPro, AAS is an exceptionally user-friendly operation which offers accurate and faultless contour cutting by automatically tracking the position of graphics.



Knife-shaped Cutting Table



Unique cutting table with tipped bars that can be easily adjusted without tools to create different levels of working depths. The cutting table of T500 reduces laser reflections and delivers clear cutting edge.



Roll Holder System (Optional)

The T500 Roll Holder System is handy for users to manually load roll media like flex, film, label, technical fiber, felt and more for laser cutting and engraving job.



Specification		T500				
Laser Wattage		60W	80W	100W	150W	200W
Laser Source		Sealed CO ₂ Laser				
Cooling		Air-cooled		Water-cooled		
Work Area		51 x 35 in. (1300 x 905 mm)				
Maximum Part Size (W x L x H)	w/o cutting table	53 x 36 x 5 in. (1346 x 916 x 127 mm) with 2 1/4" lens				
	All doors open	53 x 36 x 3 in. (1346 x 916 x 76.2 mm) with 6" lens				
	With cutting table	52 x 35 x 4.4 in. (1325 x 889 x 114 mm) with 2 1/4" lens				
Dimensions (W x L x H)		71.6 x 49.2 x 52.3 in. (1820 x 1250 x 1330 mm)				
Weight		420 kg / 924 lb		440 Kg / 968 lb		
Drive		AC Servo Control				
Maximum Cutting Speed*		40IPS				
Throughput (SIPH-Square Inch Per Hour)		133.95 in ² /hr (864.2 cm ² /hr)				
Speed Control		Adjustable from 0.1~100% (Up to 16 color-linked speed settings per job)				
Power Control		Adjustable from 0~100% (Up to 16 color-linked power settings per job)				
Distance Accuracy		0.254 mm or 0.1% of move, whichever is greater				
Engraving capability		256-level gray scale image processing capability				
Z-Axis Movement		Manual				
Resolution (DPI)		Available 125, 250, 300, 380, 500, 600, 760, 1000, 1500				
Computer Interface		10 Base-T Ethernet USB Type-A 2.0  - For USB storage (Max. 32GB capacity, FAT file system) USB Type-B 2.0  - For connecting with the computer				
Memory Size		32M (4M Reserved for System Files)				
Focus Lens		Standard 4" focal lens in enclosed lens carriage (Optional 2" / 6" lens)		Standard 6" focal lens in enclosed lens carriage (Optional 2" / 4" lens)		
Display Panel		4-line LCD panel showing current file name, total working time, laser power, engraving speed, file(s) loaded into memory buffer, setup and diagnostic menus				
Cutting Table		Knife-shaped cutting bars with aluminum grid cutting table				
Safety		Class I Laser Product Compliant with EN60825, Class II Laser Product Compliant with CDRH, 2006/42/EC Machinery Directive Compliance Class 4 Laser Product Compliant with CDRH with the optional pass-through door module				
Operation Voltage		200-240VAC. 50/60Hz auto switching, Max. 15A	200-240VAC. 50/60Hz auto switching, Max. 25A		200-240VAC. 50/60Hz auto switching, Max. 30A	
Fume Extraction System		External exhaust system with minimum flow rate 2000m ³ /h (CFM 1177 ft ³ /min) is required, 3.8kPa negative pressure (Pure-Air PA-2000FS-IQ @ 8" exhaust port)				

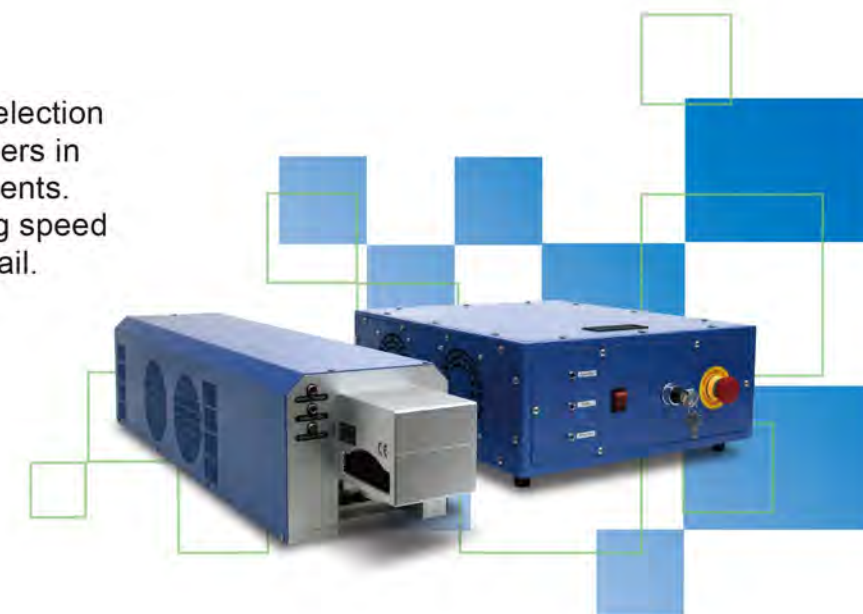
*Speed is not equal throughput. See dealer or visit <http://www.gccworld.com> for more details.
 Δ Specifications are subject to change without prior notice.

Laser Marking Systems

GCC LaserPro laser marker series carries selection of CO₂ and fiber, laser sources, providing users in any industry with outstanding quality equipments. The galvo scan-head brings you fast marking speed and is able to perform the finest marking detail.

StellarMark I Series & C Series

The GCC StellarMark C-series and I-series are high speed galvanometer laser marking systems. The C-series are marking systems with CO₂ laser while I-Series are marking systems with fiber lasers suitable for working with metallic materials.

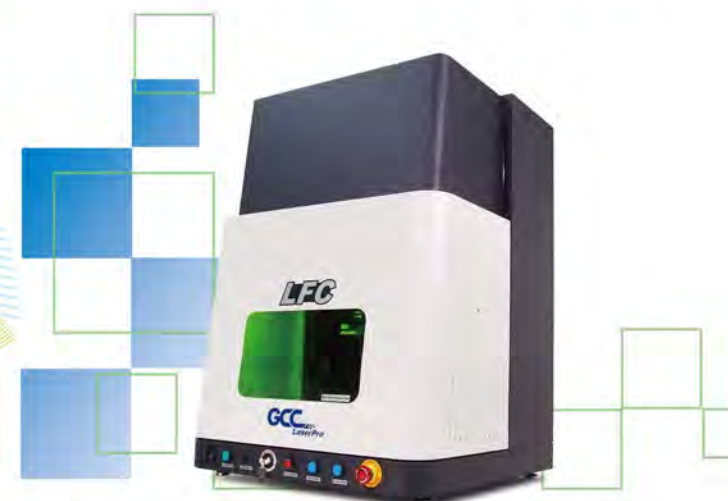


LFC II

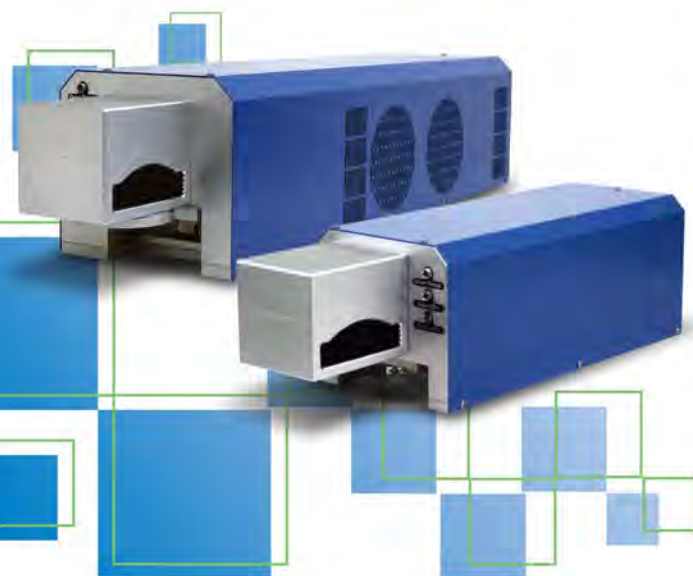
LFC II Workstation integrates various processing modes and exclusive accessories to meet customers' need. 700 x 400 mm working table is able to place large objects and setup fixtures effortlessly.

LFC D Desktop Workstation

GCC LaserPro LFC D is a desktop workstation for laser markers. The industry-level equipment has many advanced features such as an anti-trapping door, key switch, user-level control, pass-through, etc. and meets customers' needs completely.



StellarMark I Series & C Series



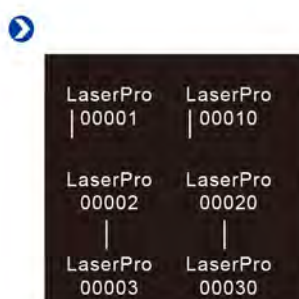
G-Mark Library (Optional)

This programmable software can be used to customize functions by using VB scripts. All commands are received real time from a master PC and position offsets, rotating angles, and sequential marking can be easily set up.



Automatic Serial Marking

With this feature, users can increase or decrease the serial part number automatically.



Barcode Marking

19 types of 1D and 8 types of 2D barcodes (Data Matrix, PDF417, QR Code and Maxi Code) are available.



Mark on The Fly (Optional)

Non-stop, "on-the-fly" marking of parts maximizes productivity. Precise laser can mark fast-moving parts while the conveyor is at constant or varying speed.



Pyramid Focus Tool

The innovative and patented pyramid focus tool is an accessory unit for providing the best working distance on StellarMark IFII series.



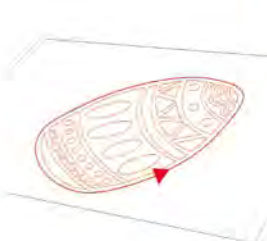
Secure Password Protection

Three-tier password security system restricts unauthorized access to the production line.



Preview Mode

Variable-speed, red dot pointer "preview" mode allows for accurate and easy marking positioning on the marked part.



RoHS Compliance

As a market leader and an environment-friendly product manufacturer, GCC is committed to make all-out efforts to preserve the global environment. Our products are compliant with the European Parliament Directive 2002/95/EC, Restriction of Hazardous Substances (RoHS).



Specification		I Series				
Model No.		IFII 20JFL	IFII 20SHS	IFII 30JFL	IFII 50JFL	IFII 60JFL
Laser Source	Wavelength	1064 nm				
	Type	Yb-doped, MOPA				
	Output Power	20W		30W	50W	60W
	Beam Mode	TEM00				
	Beam Quality (M ²)	<1.5	≤ 1.3	<1.5	<1.5	<1.8
	Frequency	1-600 kHz	1-1000 kHz	1-600 kHz	1-600 kHz	1-400 kHz
	Waveform	Single	25	Single	Single	Single
	Cooling	Air-cooled				
Electrical Requirement	Power Supply	100~240V, 50/60 Hz Max 15 Amp				
	Power Consumption	Max. 1650W				
Dimensions	Laser head	L 497 x W 168 x H 152 mm				
	Control unit	L 470 x W 360 x H 241 mm				
Operating System		Microsoft Windows 2000 / XP / Vista(32/64 Bit) / 7(32/64 Bit) / 8(32/64 Bit) (Desktop or Laptop PCs)				
Environment	Temperature	15°C ~ 35°C				
	Humidity	10 ~ 80% Non condensing				
Safety		Class 4 (EN60825-1 Class 1 available with safety shield and LFC) 2006/42/EC Machinery Directive 2014/35/EU Low Voltage Directive 2014/30/EU Electromagnetic Compatibility Directive				
Max. Linear Marking Speed		3,000 mm/s				
Max. Marking Speed		10,000 mm/s				
Laser Head Weight		9kg				
Control Unit Weight		25kg				

Specifications		StellarMark IFII 20/30/50/60JFL Scan Lens			
Model No.		70	110	180	300
Working Area		70 x 70 mm	110 x 110 mm	180 x 180 mm	300 x 300 mm
Spot Size*		27 μm	44 μm	71 μm	114 μm
Working Distance		142 +/- 1 mm	220 +/- 2 mm	350.3 +/- 2 mm	553.3 +/- 3 mm
Repeatability**		0.03 mm	0.03 mm	0.04 mm	0.06 mm

Specifications		IFII 20SHS Scan Lens		
Model No.		70	110	180
Working Area		70 x 70 mm	110 x 110 mm	180 x 180 mm
Spot Size*		22 μm	35 μm	55 μm
Working Distance		142 +/- 1 mm	220 +/- 2 mm	350.3 +/- 2 mm
Repeatability**		0.03 mm	0.03 mm	0.04 mm

Above specifications are subject to change without further notices. See dealer or visit <http://www.GCCworld.com> for more details.

All above spot size will be material dependent.

*According to theoretical calculation

**The test is 8-hour continuous firing with power level at 30% using a 60JFL

Δ Specifications are subject to change without prior notice

Specification		StellarMark CIIS 12/CIIS 30V/CIIP 60Ti/CIIP 60Ti93/CIIA-Li/CIIA-HSII 12				
Model.No.		CIIS12	CIIA-Li 12	CIIA-HSII 12	CIIS 30V	CIIP 60Ti / 60Ti93
Laser Source	Wavelength	10.6 μm				10.6 μm / 9.3 μm
	Type	CO2, sealed-off				
	Output Power	12W			30W	60W
	Cooling	Air-cooled, no water chiller required				
Electrical Requirements	Power Supply	AC Auto Switching 115 V/230 V, 50-60 Hz/ single phase				
	Power Consumption	740W			1240W	
Dimensions (L x W x H)	Laser Head	831 x 200 x 178 mm	285 x 184 x 560 mm	620 x 200 x 150 mm	831 x 200 x 178 mm	880 x 211 x 202 mm
	Control Unit	500 x 420 x 192.4 mm				
Laser Marker Weight		15 kg	17.2 kg	15 kg	17 kg	30 kg
Control Unit Weight		17 kg			19 kg	
Max Linear Marking Speed		3000 mm/s				
Maximum Marking		10000 mm/s				
Operating System Speed		Microsoft Windows 2000 / XP / Vista(32/64 Bit) / 7(32/64 Bit) / 8(32/64 Bit) (Desktop or Laptop PCs)				
Environment	Temperature	15°C~ 35°C				
	Humidity	10 ~ 80% Non condensing				
Safety		Class 4 (EN60825-1 Class 1 available with safety shield and LFC) 2006/42/EC Machinery Directive 2014/35/EU Low Voltage Directive 2014/30/EU Electromagnetic Compatibility Directive				

Specification		StellarMark CIIS 12 / CIIA-Li 12 / CIIS 30V			
Model No.		CIIS 010	CIIS / CIIA-Li 050	CIIS 070	CIIS 140
Working Area		10 x 10 mm	50 x 50 mm	70 x 70 mm	140 x 140 mm
Spot Size*		0.09 mm	0.12 mm	0.24 mm	0.46 mm
Repeatability**		0.001 mm	0.003 mm	0.004 mm	0.008 mm

Specification		StellarMark CIIP 60Ti / 60Ti93				
Model No.		CIIP 60Ti / CIIP 60Ti93 070	CIIP 60Ti / CIIP 60Ti93 140	CIIP 60Ti / CIIP 60Ti93 200	CIIP 60Ti / CIIP 60Ti93 300	CIIP 60Ti / CIIP 60Ti93 300 Doublet
Working Area		70 x 70 mm	140 x 140 mm	200 x 200 mm	300 x 300 mm	300 x 300 mm
Spot Size*		0.12 mm	0.24 mm	0.37 mm	0.53 mm	0.48 mm
Repeatability**		0.004 mm	0.008 mm	0.012 mm	0.017 mm	0.017 mm

Specification		StellarMark CIIA HSII
Model No.		CIIA HSII 140
Working Area		140 x 140 mm
Spot Size*		0.23 mm
Repeatability**		0.008 mm

Above specifications are subject to change without further notices. See dealer or visit <http://www.GCCworld.com> for more details.

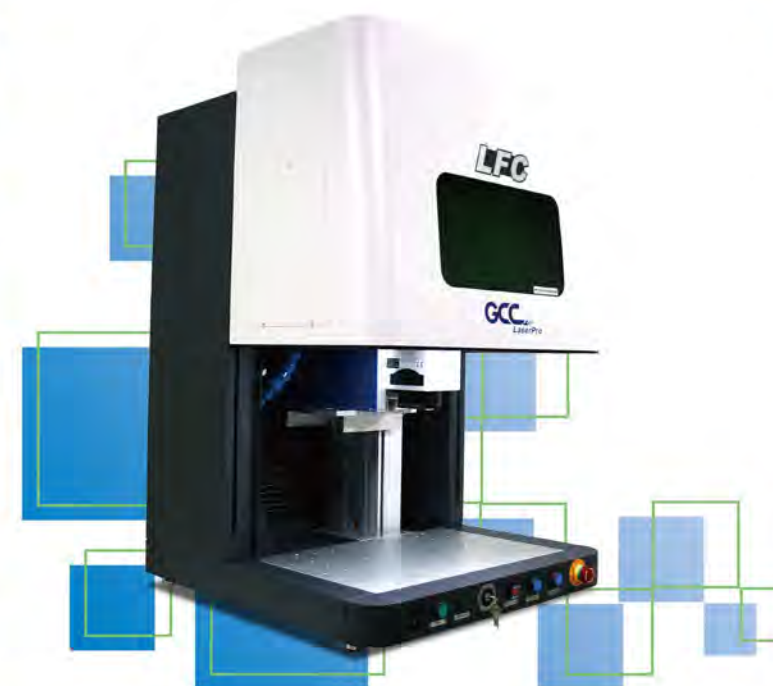
All above spot size will be material dependent.

*According to theoretical calculation.

Δ Specifications are subject to change without prior notice.

** File transmission at USB 2.0 Full Speed rate.

LFC D



Pass-through Side Panel

Removable side doors allow user to process long work pieces with ease for greater business flexibility.



300x300 mm Standard Table

Standard table with matrix M6 circular slots for fixture mounting; work piece setup could not be easier than this.



Internal Illumination

LED illuminates the working space for clear view of work in process.



Electronic Z axis

Electronically controlled Z up and down buttons make it easy to fine tune the focus.



Automatic and Anti-Trapping Safety Door

Automatically controlled front door opens and closes to secure safe operation.



Emergency Stop

Big red button on the right of machine allows operators to stop the laser and AC power immediately for much safer operation.



MultiFOCUS Function (Optional Item)

MultiFOCUS function allows user to define multiple focal distances at once according to the object height and Z-axis automatically adjusts accordingly, eliminating the frequent needs to set focal distance.



Key Switch

Key Switch manages different authority levels between Service Mode and Operator Mode to prevent unauthorized access to the production setups.



LFC II Workstation

Specification	LFC D Desktop Workstation
Model	LFC D
Available Laser Marker	CIIA 12/30, CIIP12/30, CIIS 12/30
	IFII 20/30/50RMZ, IFII 20SHS, IFII 20/30/50JFL
	IFIIS 20/30/50JFL
	3DS
Scan Field	Max. 300 x 300 mm
Working Table Size	550 x 360 mm
Front Door	Automatic Door
Max. Loading (Z-axis Table)	25 kg
Z-axis Travel	80 - 620 mm
Safety Class	Class 1 laser product compliant with EN-60825-1 Class 2 laser product compliant with CDRH (LFC D + StellarMark C series) Class 3R laser product compliant with CDRH (LFC D + StellarMark I series/3DS series) Class 4 Laser Product Compliant with CDRH with the optional pass-through door module
Software	G-Mark / MM3D
Operating System	Win 7 / 8 / 10
Power Supply	AC Auto Switching 115 / 230V, 50-60Hz / Single Phase
Power Consumption	Max. 1240W
Operating Temperature	15°C~35°C
Operating Humidity	10 ~ 80% Non condensing
Dimension (L x W x H)	750(L) x 700(W) x 1000(H) mm 940(L) x 1020(W) x 1470(H) mm (with package)
N.W.	100 kg
G.W.	180 kg
Optional Item	Rotary Attachment
	MultiFOCUS
	Air Extraction System

Max. work piece size

C-Series				
Lens	Scan Area	Max. Work Piece Size		
		Length	Width	Height
10	10 x 10 mm	550 mm	360 mm	577 mm
50	50 x 50 mm			543 mm
70	70 x 70 mm			514 mm
140	140 x 140 mm			390 mm
140DL	140 x 140 mm			337 mm

I-series				
Lens	Scan Area	Max. Work Piece Size		
		Length	Width	Height
70	70 x 70 mm	550 mm	360 mm	485 mm
110	110 x 110 mm			405 mm
180	180 x 180 mm			304 mm
300	300 x 300 mm			53 mm

* Above specifications are subject to change without further notices. See dealer or visit <http://www.GCCworld.com> for more details.
* All above spot size will be material dependent.



Pass-Through Door

The left and right pass-through doors can be further removed to place long objects or allow external setup conveyor to feed in materials for laser marking on fly.
* When the right door and left door are open, machine becomes a Class 4 equipment and users must wear goggles to operate the machine.



Standard Table

Standard table with matrix M6 circular slots for fixture mounting, working objects setup is more than easy.



Dual Start Button

Advanced secure protection by simultaneously pushing the Dual Start buttons to fire laser.



MultiFOCUS (Optional)

MultiFOCUS function allows to define multiple focus distances according to different height of working objects at once, the Z axis will automatically move to correct position to deliver precise laser marking jobs. Laser marking on different height working surface in one shot now is possible.



Emergency Stop

Big red button located on the right of machine allows operators to stop the laser and AC power immediately to provide highly safety operation.



Clean Work Area

Integrated vacuum pipe for extraction particles created during laser processing.



Automatic Safety Door

Automatically controlled front door open and close to secure safety operation.



Key Switch

Key Switch manages different authority levels between Service Mode and Operator Mode to restrict unauthorized access to the production setups.



Specification		LFC II Workstation
Model	LFC II	
Available Laser Marker	CIIA/ CIIP/ CIIS/ IFII/ IFIIS Series	
Scan Lens	CO ₂	70 x 70 mm, 140 x 140 mm, 200 x 200 mm, 300 x 300 mm
	Fiber	70 x 70 mm, 110 x 110 mm, 180 x 180 mm
Working Table Size	700 x 400 mm	
Front Door	Automatic door	
Max. Loading	50 kg	
Z-axis Travel	385 mm	
Safety Class	Class 1 (EN60825-1)	
Software	G-Mark Basic / G-Mark Library	
Operating System	Microsoft Windows XP / Vista(32/64 bit) / 7(32/64 bit) / 8(32/64 bit) (Desktop or Laptop PCs)	
Interface	USB x 1, VGA x 1	
Power Supply	AC Auto Switching 110 - 240 VAC, 50-60Hz / Single Phase	
Power Consumption	1650W	
Operating Temperature	15°C ~35°C	
Operating Humidity	10 ~ 80% Non condensing	
Dimension	1585 (L) x 852 (W) x 1745 (H)	
	1854 (L) x 1192 (W) x 2050 (H) mm (with package)	
N.W.	235 kg	
G.W.	580 kg	
Optional Item	Rotary Table (Ø 650 mm, 2 station)	
	Screen Frame Module	
	MultiFOCUS	
	Air Extraction System	

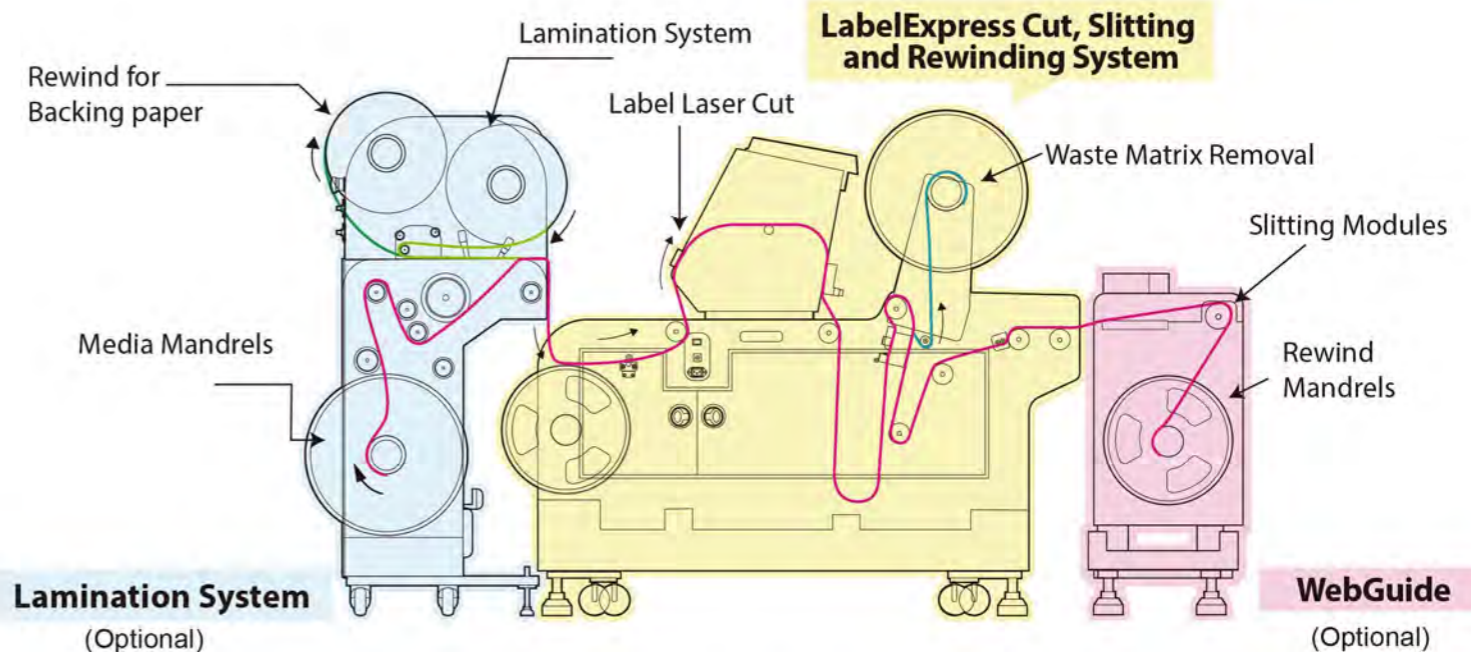
* Please visit www.GCCworld.com for more detail.
 Δ Specifications are subject to change without prior notice.

Digital Finishing Equipment

The Fastest Laser Label Finisher in its Class

LabelExpress with Lamination System

GCC laser label finisher with contactless laser beam handles die cutting, kiss cutting, bridge cutting and lamination (optional). Along with the automatic laminating, winding/unwinding system, waste removal roll, CCD camera and slitting modules, LabelExpress offers completed digital and automatic solution for roll label cutting. No extra tooling expense and waiting time needed, ultimate flexibility to fulfill dynamic market demands.



Lamination (Optional)



Bridge Cutting



Slitting Module (Optional)



CCD Camera



Kiss Cutting

LabelExpress with Lamination System (15")

Closed-loop DC Servo Technology

A Closed-loop DC servo motor can deliver greater continuous shaft power at higher speeds than a stepper of the same frame size. In addition, It can also give far greater accuracy due to the continuous movement, instead of constant stopping and restarting. GCC high speed closed-loop DC servo motor technology guarantees precise and fast carriage movement with exceptional accurate outputs.



Auto-feeding Paper Sensors

Paper sensors detect the distance in relation with media. When the distance is too long, the media will be automatically fed and cut materials will rewind into the roll for take up.



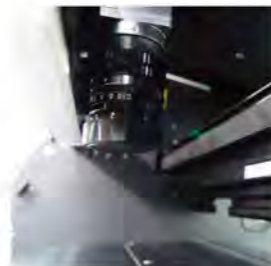
Intuitive Control Panel Interface

A control panel with coherent hot-key design and graphical icon display allows you to change laser parameter settings, set jobs to a repetitive mode, queue jobs, delete jobs, etcetera.



SmartVISION™ Pro CCD

SmartVISION™ Pro CCD is a unique artificial intelligent system that reads two marks with scaling and angle compensation to perform precise contour cutting for printouts.
* Use 3mm square as registration marks for high precision cutting.



Steel Drum Driven Technology

Reliable steel drum technology drives materials with long plotting and provides excellent tracking ability.



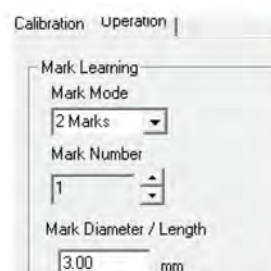
Illumination Light

Built-in LED light module illuminates the working space and makes every engraving detail easy to see.



Dedicated SmartCONTROL Label Driver

Dedicated SmartCONTROL Label allows the operators an effortless way to setup a job. Workflows can be drastically simplified with the intuitive and easy-to-use SmartCONTROL Label.



Auto-feeding Ultrasonic Sensors

Ultrasonic sensors detect the distance in relation with media. When the distance is too long, the media will be automatically fed and cut materials will rewind into the roll for take up.



Laser Label Finisher		LE15	
Model		LE15-20V93	LE15-30V
Cutting Width		381 mm (15")	
Work Area (Sheet) (W x L)		381 x 500 mm (15" x 19.7")	
Max. Label Graphic Size		Max. Label Size : 308 x 330 (15" x 13")	
Max. Roll Material Size	Width	400 mm (15.7")	
	Roll Size	76.2 mm (3") core with 300 mm (11.8") diameter	
	Roll Weight	25 kgs	
Laser Source		Sealed CO ₂ Laser	
Wattage		20W 9.3-µm	30W 10.6-µm
Drive		Closed-loop DC Servo Control	
Roll to Roll		Stepper motor Control	
Maximum Motor Speed		1,530 mm/s (60ips) (for straight line cutting)	
Speed Control		Adjustable from 0.1~100% (Up to 16 color-linked speed settings per job)	
Power Control		Adjustable from 0~100% (Up to 16 color-linked speed settings per job)	
Alignment System		CCD Module	
Distance Accuracy		0.254 mm or 0.1% of move, whichever is greater	
Computer Interface		Standard USB port	
Operating Systems		MS Windows	
Display Panel		4-line LCD panel	
Paper Feeding		Auto feed sensor, re-winding system, paper alignment control, waste removal system	
Vacuum System		Down vacuum for media fixation Top vacuum for media surface cleaning	
Process Materials		Paper, PET, PP, BOPP, etc.	
Safety		Class IV Laser Product Compliant with EN60825-1:2014 Class IV Laser Product Compliant with CDRH	
Dimensions (W x L x H)	Machine	1,070 x 1,441 x 1,180 mm (42.2 x 56.7 x 46.5 in.)	
	Shipping	1,570 x 1,300 x 1,470 mm (52 x 65.4 x 58.7 in.)	
Weight	Machine	250 kg	
	Shipping	385 kg	

* Specifications are subject to change without prior notice.

Optional Items



Auto Sheet Feeder



WebGuide



Laminator

DecalExpress (24") / DecalExpress-ECO (24")



Closed-loop DC Servo Technology

A Closed-loop DC servo motor can deliver greater continuous shaft power at higher speeds than a stepper of the same frame size. In addition, It can also give far greater accuracy due to the continuous movement, instead of constant stopping and restarting. GCC high speed closed-loop DC servo motor technology guarantees precise and fast carriage movement with exceptional accurate outputs.



Auto-feeding Paper Sensors

Paper sensors detect the distance in relation with media. When the distance is too long, the media will be automatically fed and cut materials will rewind into the roll for take up.



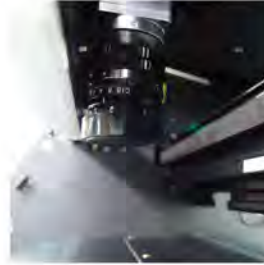
Waste Drawer

The Waste collects unnecessary materials when performing cut through function providing an uninterrupted workflow. Media Support Brackets that is pre-installed on the work area is able to hold the media and keep the media flat while moving back and forth.



SmartVISION™ Pro CCD

SmartVISION™ Pro CCD is a unique artificial intelligent system that reads two marks with scaling and angle compensation to perform precise contour cutting for printouts. * Use 3mm square as registration marks for high precision cutting.



Steel Drum Driven Technology

Reliable steel drum technology drives materials with long plotting and provides excellent tracking ability.



Illumination Light

Built-in LED light module illuminates the working space and makes every engraving detail easy to see.



Dedicated SmartCONTROL Label Driver

Dedicated SmartCONTROL Label allows the operators an effortless way to setup a job. Workflows can be drastically simplified with the intuitive and easy-to-use SmartCONTROL Label.

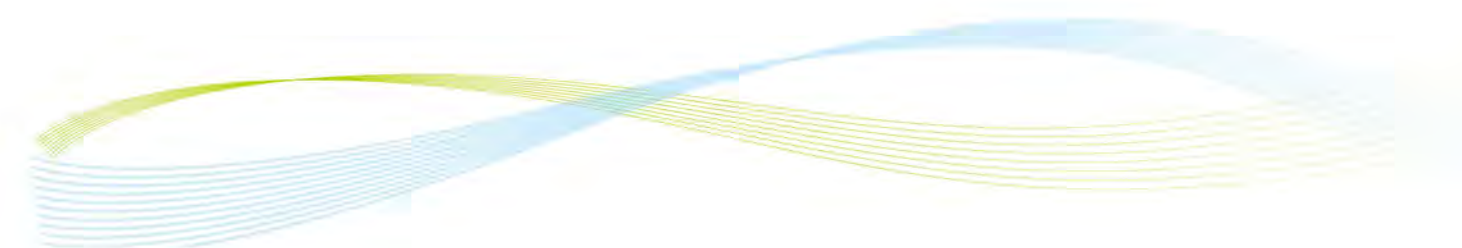
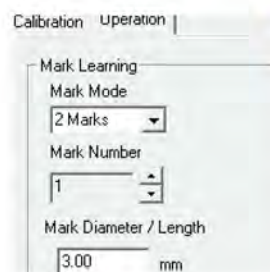


Auto-feeding Ultrasonic Sensors

Ultrasonic sensors detect the distance in relation with media. When the distance is too long, the media will be automatically fed and cut materials will rewind into the roll for take up.

Laser Decal Finisher		DE24		DE24-ECO	
Model		DE24-20V93	DE24-30V	DE24-20V93(ECO)	DE24-30V(ECO)
Cutting Width		610 mm (24")		610 mm (24")	
Work Area (Sheet) (W x L)		381 x 500 mm (15" x 19.7")		381 x 500 mm (15" x 19.7")	
Max. Label Graphic Size		381 x 330 mm (15" x 13")		381 x 330 mm (15" x 13")	
Max. Roll Material Size	Width	85~610 mm (3.4"~24")		85~610 mm (3.4"~24")	
	Roll Size	76.2 mm (3") core with 300 mm (11.8") diameter		76.2 mm (3") core with 170 mm (6.7") diameter	
	Roll Weight	25 kgs		12 kgs	
Laser Source		Sealed CO ₂ Laser			
Wattage		20W 9.3-µm	30W 10.6-µm	20W 9.3-µm	30W 10.6-µm
Drive		Closed-loop DC Servo Control			
Roll to Roll		Stepper motor Control			
Maximum Motor Speed		1,530 mm/s (60ips) (for straight line cutting)			
Speed Control		Adjustable from 0.1~100% (Up to 16 color-linked speed settings per job)			
Power Control		Adjustable from 0~100% (Up to 16 color-linked speed settings per job)			
Alignment System		CCD Module as standard		CCD Module as optional item	
Distance Accuracy		0.254 mm or 0.1% of move, whichever is greater			
Computer Interface		Standard USB port			
Operating Systems		MS Windows			
Display Panel		4-line LCD panel			
Paper Feeding		Auto feed sensor, re-winding system, paper alignment control, waste removal system			
Vacuum System		Down vacuum for media fixation			
		Top vacuum for media surface cleaning			
Process Materials		Paper, Nonwoven, PET, PP, BOPP, etc.			
Safety		Class IV Laser Product Compliant with EN60825-1:2014 Class IV Laser Product Compliant with CDRH			
Dimensions (W x L x H)	Machine	1,135 x 1,441 x 1,180 mm (44.6 x 56.7 x 46.5 in.)		1,135 x 700 x 1,305 mm (44.6 x 27.6 x 51.4 in.)	
	Shipping	1,385 x 1,741 x 1,430 mm (54.5 x 68.5 x 56.3 in.)		1,230 x 920 x 1,605 mm (48.4 x 36.2 x 63.2 in.)	
Weight	Machine	275 kg		90 kg	
	Shipping	375 kg		186 kg	
Facility Requirements					
Electrical		100~240 Volt AC, 50/ 60Hz, Auto Switching, Max. 10 Amp			
Power Consumption		MAX:1000W			

* Specifications are subject to change without prior notice.



DFS



Work Area

Max. Working area up to 320 x 320 mm.



Large Protection Window

Large protection window for easy working process monitoring.



Dual CCD

Two CCD for precise cutting solution.



Accept B3 Size Media

Max. media size up to B3.



RoHS Compliance

All GCC products are RoHS-compliant (the European Parliament Directive 2002/95/ EC, Restriction of Hazardous Substances) and lead-free (pb free). GCC will continue to concern and provide environmentally friendly products to protect the earth for our further generation.



Sturdy and Rigid Chassis

Sturdy and rigid chassis to meet industrial requirement.



Auto Sheet Feeder-DFS (Optional)

GCC DFS offers a total solution with auto sheet feeding system that provides labor free operation with high speed laser die cutting. Each set comes with the media tray which collects completed cutting sheets.



Screen Frame Module for Laptop (Optional)

Optional Screen Frame Module for Laptop can help to put your NB, laptop right beside the machine and makes it more convenient when operating.



Laser Decal Finisher	DFS			
Model	DFS30-80GT	DFS30-100GT	DFS30-150SR	DFS30-200SR
Field Size of Galvo	12.6" x 12.6" (320 x 320 mm)			
Max. Line Speed	11 m/sec (depending on cut lengths)			
Material Thickness	0.006" x 0.012" (0.15 mm ~ 0.3 mm)			
Laser Source	CO2 laser, 10.57-10.63µm wavelength (CW)		CO2 laser, 10.57-10.63µm wavelength (CW/Pluse)	
Laser Wattage	80W	100W	150W	200W
Cooling	Air-cooled		Water-cooled	
Media Size	Max. Media size 3.9" x 19.69"(353 x 500 mm)			
Working Area	12.6" x 12.6" / 12.6" x 19.69"(320 x 320 mm / 320 x 500 mm) with conveyor			
Machine Dimensio	L 63.27" x W 55.24" x H68.11" (1607 x 1403 x 1730mm)			
Conveyor	Standard			
Conveyor Drive	Servo Motor			
Conveyor Loading	Max. 2 kg			
CCD Recognition	CCD x 2			
Compatible Operating Systems	Windows 7/ 8/ 8.1/ 10 (32 & 64Bit)			
Computer Interface	USB 3.0 port x 2 (only support USB 3.0), Ethernet			
Display Panel	Button Base			
Safety	Class 4 Laser Product Compliant with EN60825-1:2007			
Electricity	200-240V AC			
Power Consumption	4500W (Include: Laser and conveyor system)			6100W (Include: Laser and conveyor system)
Air Exhaust System	External exhaust system with minimum flow rate 1350 m³/hr (CFM795 ft³/min) is required, one 6" connection on the machine.			
Auto Sheet Feeder (Optional Item)				
Max. Speed	45 M (148 ft) / min			
Max. Paper Width	13.9" x 19.7" (353 x 500 mm)			
Paper Weight	120 gsm~500 gsm			
Min. Paper Size	216 mm (8 1/2 in.)			
Power Requirement	110/220V, 50/60HZ, 4.6A/2.3A Fuse Rating 6A TimeDelay			
Dimension	32.4" x 30.8" x 47.1" (823 x 782 x 1196 mm)			
Weight	305 lbs (120 Kgs)			

* Speed does not equal to throughput. See dealer or visit www.GCCworld.com for more details.
 Δ Specifications are subject to change without prior notice.

