

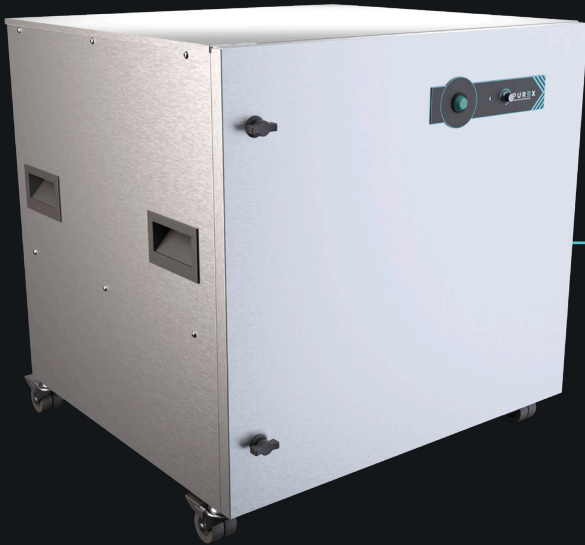
XBASE

Moderate, multi-use fume extraction unit

FUME FILTRATION



T. 336-288-1613 eMail: Sales@fumefiltration.com



Description & features

- VariColour filter blocked warning system
- Highest grade HEPA and carbon technology
- Automatic electronic flow control - maintains a constant extraction rate even as the filter blocks
- Quiet in operation
- Simple to install and easy to relocate

Filters



Main Filter Code

110545

Description

HEPA/Chemical



Pre-Filter Code

111108

Description

F8/F9 Labyrinth

Specification

Voltage	120v	230v
Part Number	OAL4107	OAL4104
Wattage	1.2kW	
Frequency	50Hz / 60Hz	
Cabinet Height	750mm	
Cabinet Width	707mm	
Cabinet Depth	691mm	
Cabinet Weight	80kg	
Airflow	400m ³ /h	
Sound Level	<60dBa	

Machine supplied with

• 1 x Main Filter • 1 x Pre-filter • 1 x Connection Kit • 1 x Power Cable • 1 x Manual

XBASE

Moderate, multi-use fume extraction unit

FUME FILTRATION



T. 336-288-1613 eMail: Sales@fumefiltration.com

Main filter

Code	Description
113585	HEPA / Chemical Special

Connection kits

If you do not see a connection kit that fits your machine or pipework, please contact Purex or your representative

100032

Hose End Diameter	Hose Length	Purex Inlet Diameter
50mm	3m	80mm

Connect to 50mm diameter pipe/port or Purex valve

3.0m

120288

Hose End Diameter	Hose Length	Purex Inlet Diameter
100mm	2.3m	80mm

Connect to 100mm diameter pipe/port

0.3m 2.0m

120292

Hose End Diameter	Hose Length	Purex Inlet Diameter
100mm	1.6m	80mm

Connect to 100mm diameter pipe/port

0.3m 1.3m

LASER
XBASE

120293

Hose End Diameter	Hose Length	Purex Inlet Diameter
80mm	1.3m	80mm

Connect to 80mm diameter pipe/port

1.3m

Interfacing

Interfacing can remotely start the Purex machine when the connected machine starts.

Interfacing can also warn the connected machine when the Purex machine is in alarm.

Your Machine

10011010



10011010

Extractor

Take a look through our [Interfacing Guide](#) to see our extensive range of options